

Seattle Gun Violence Landscape

October 2024

Prepared for:
Seattle City Council

Prepared by:
Police Executive Research Forum (PERF)

Lexi Gill, Ph.D.
Consultant for PERF

Rafael Serrano
King County Prosecuting Attorney's Office



POLICE EXECUTIVE
RESEARCH FORUM

Table of Contents

Introduction	5
Distribution of Gun Offenses Across Council Districts	5
Map 1. All Gun Offenses in King County Council Districts (Jan 1, 2021 – Dec 31, 2023) (N = 8,805)	6
Map 2. All Gun Offenses in Seattle City Council Districts (Jan 1, 2021 – Dec 31, 2023) (N = 3,045)	7
Gun Violence Trends in Seattle vs. King County	8
Table 1. Gun Crime Type by Percentage of All Gun Crime in King County (Jan 1, 2021 – Sept 5, 2024) (N = 7,191)	8
Table 2. Gun Crime Type by Percentage of All Gun Crime in Seattle (Jan 1, 2021 – Sept 5, 2024) (N = 2,806)	8
Table 3. Gun Crime Type by Percentage of All Gun Crime in Other Cities in King County (Jan 1, 2021 – Sept 5, 2024) (N = 4,385)	9
Table 4. Gun Violence Types: Overall Number and Prevalence in Seattle vs. Other KC Cities (Jan 1, 2021 – Sept 5, 2024) (N = 7,191)	10
Monthly Trends in Gun Violence in Seattle vs. King County	10
Table 5. Homicide by Month and Year, Seattle vs. Other King County Cities (Jan 1, 2021 – Sept 5, 2024) (N = 315)	12
Table 6. Shots Injury by Month and Year, Seattle vs. Other King County Cities (Jan 1, 2021 – Sept 5, 2024) (1,148)	13
Table 7. Shots Property by Month and Year, Seattle vs. Other King County Cities (Jan 1, 2021 – Sept 5, 2024) (N = 1,652)	14
Table 8. Shots Fired by Month and Year, Seattle vs. Other King County Cities (Jan 1, 2021 – Sept 5, 2024) (N = 2,703)	15
Table 9. Armed Robbery by Month and Year, Seattle vs. Other King County Cities (Jan 1, 2021 – Sept 5, 2024) (N=1, 373)	16
Gun Violence in Locations Across Years	17
Table 10. Gun Violence Location Type by Year in King County (Jan 1, 2021 – Sept 5,	

2024) (N = 7,191)	18
Table 11. Gun Violence Location Type in Seattle and Other King County Cities (Jan 1, 2021 – Sept 5, 2024) (N = 7,191)	19
Prevalence of Gun Violence in Specific Locations	20
Table 12. Select Gun Violence Locations by Month and Yearly Breakdown in Seattle (Jan 1, 2021 – Sept 5, 2024) (n = 884)	21
Table 13. Select Gun Violence Locations by Month and Yearly Breakdown in Other King County Cities (Jan 1, 2021 – Sept 5, 2024) (n = 1,388)	22
2024 Gun Violence Distribution in Seattle Zip Codes	23
Table 14. Gun Violence in Seattle Zip Codes by Yearly Breakdown (Jan 1, 2021 – Sept 5, 2024) (N = 2,806)	24
Table 15. Seattle Zip Codes with the Highest Number of Gun Violence Incidents Categorized by Selected Locations (Jan 1, 2021 – Sept 5, 2024) (n = 435 of 1,404 incidents)	25
2024 Gun Violence Locations by Day of Week and Time in Seattle	26
Table 16. Location of Gun Violence Incidents by Day of Week in Seattle (Jan 1, 2024 – Sept 5, 2024) (N = 612)	27
Table 17. Location of Gun Violence Incidents by Time Range in Seattle (Jan 1, 2024 – Sept 5, 2024) (N = 612)	28
Gun Violence Victim Age	29
Graph 1. Number of Homicide Victims by Age Range in King County (Jan 1, 2021 – Sept 5, 2024) (N = 382)	30
Graph 2. Number of Homicide Victims by Age Range in Seattle (Jan 1, 2021 – Sept 5, 2024) (N = 158)	30
Graph 3. Number of Homicide Victims by Age Range in Other King County Cities (Jan 1, 2021 – Sept 5, 2024) (N = 224)	31
Graph 4. Number of Nonfatal Shooting Victims by Age Range in King County (Jan 1, 2021 – Sept 5, 2024) (N = 1,283)	31
Graph 5. Number of Nonfatal Shooting Victims by Age Range in Seattle (Jan 1, 2021 – Sept 5, 2024) (N = 618)	32
Graph 6. Number of Nonfatal Shooting Victims by Age Range in Other King County	

Cities (Jan 1, 2021 – Sept 5, 2024) (N = 665)	32
Graph 7. Number of Gunshot Wound Victims by Age and Year in King County (N = 1,692)	33
Graph 8. Number of Gunshot Wound Victims by Age and by Year in Seattle (N = 782)	33
Additional King County Victim Age Analysis	34
Additional Seattle Victim Age Analysis	34
Figure 1. Gunshot Wound Victims by Most Common Ages in King County (January 1, 2021 – July 31, 2024) (N = 1,884)	35
Figure 2. All Gun Discharge Victims by Most Common Ages in King County (January 1, 2021 – July 31, 2024) (N = 2,951)	36
Figure 3. Gunshot Wound Victims by Most Common Ages in Seattle (January 1, 2021 – July 31, 2024) (N = 875)	37
Figure 4. All Gun Discharge Victims by Most Common Ages in Seattle (January 1, 2021 – July 31, 2024) (N = 1,411)	38
Gun Violence Victim Age by Location Type	39
Graph 9. Gun Violence Victims by Location and Age Range in King County (Jan 1, 2021 – Sept 5, 2024) (n = 772)	40
Graph 10. Gun Violence Victims by Location and Age Range in Seattle (Jan 1, 2021 – Sept 5, 2024) (n = 402)	40
Graph 11. Gun Violence Victims by Location and Age Range in Other KC Cities (Jan 1, 2021 – Sept 5, 2024) (n = 370)	41
Table 18. Gun Violence Victim Age Range by Select Locations Across Years in King County (Jan 1, 2021 – Sept 5, 2024) (n = 772)	42
Table 19. Gun Violence Victim Age Range by Select Locations Across Years in Seattle (Jan 1, 2021 – Sept 5, 2024) (n = 402)	43
Table 20. Gun Violence Victim Age Range by Select Locations Across Years in Other King County Cities (Jan 1, 2021 – Sept 5, 2024) (n = 370)	44
Gun Violence Landscape Key Findings	45

Gun Violence Landscape in Seattle

Introduction

On July 24, 2024, Seattle City Council President Sara Nelson requested a gun violence audit to identify current patterns of gun violence in Seattle to help inform the City Council's upcoming 2025 budget deliberations. Seattle City Council, through its auditor, asked the Police Executive Research Forum (PERF) to provide technical assistance pursuant to its Bureau of Justice Assistance Violent Crime Reduction grant.¹ The scope of the current audit is specific to recent patterns of gun violence and specifically examines the time frame of January 1, 2021, to September 5, 2024. The report assesses gun violence trends in Seattle and compares these trends to King County overall and other cities in King County. Data and supplementary analyses used to support this report were provided by the King County Prosecuting Attorney's Office.

This report defines gun violence as incidents in which a gun was discharged or used in a violent crime and includes gun-related homicides, gun-related nonfatal shootings, shots fired at property, shots fired in general, and armed robbery.² It is important to note suicides, accidental shootings, and self-defense shootings were excluded from this report as the focus is to understand criminal gun violence trends to inform the appropriate evidence-based prevention and intervention strategies.

Distribution of Gun Offenses Across Council Districts

Maps 1 and 2 show the distribution of gun offenses³ between January 1, 2021, and December 31, 2023, in various council districts.

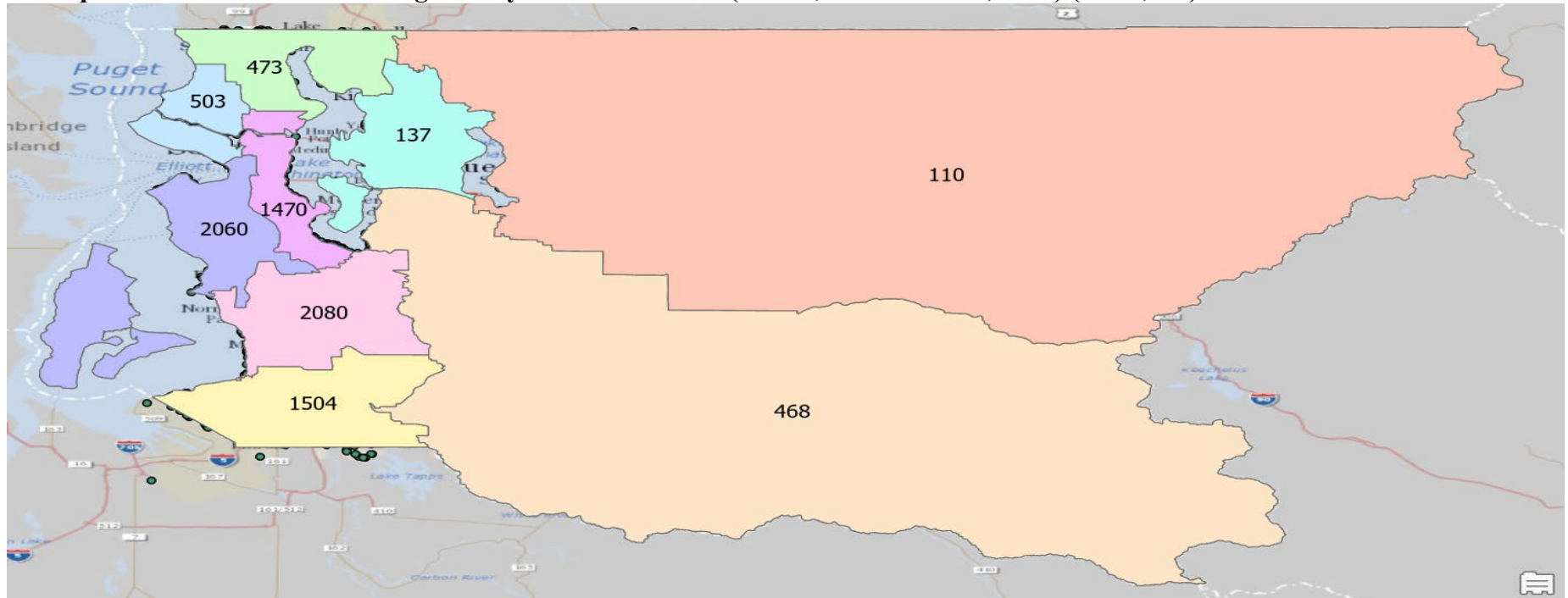
Map 1 displays the patterns of gun offenses across King County Council Districts. King County Council District 5 had the highest number of gun offenses – 2,080 total – followed by King County Council District 8, with 2,060. Together, these two districts accounted for 47.0% of the total gun offenses.

¹ See, <https://www.policeforum.org/crimereductiontta>

²The prevalence of armed robberies in Seattle is underreported in this report due to the lack of consistent data reporting on this crime type.

³ These maps display all criminal gun-related offenses, including threats, possession, and weapon offenses.

Map 1. All Gun Offenses in King County Council Districts (Jan 01, 2021 – Dec 31, 2023) (N = 8,805)

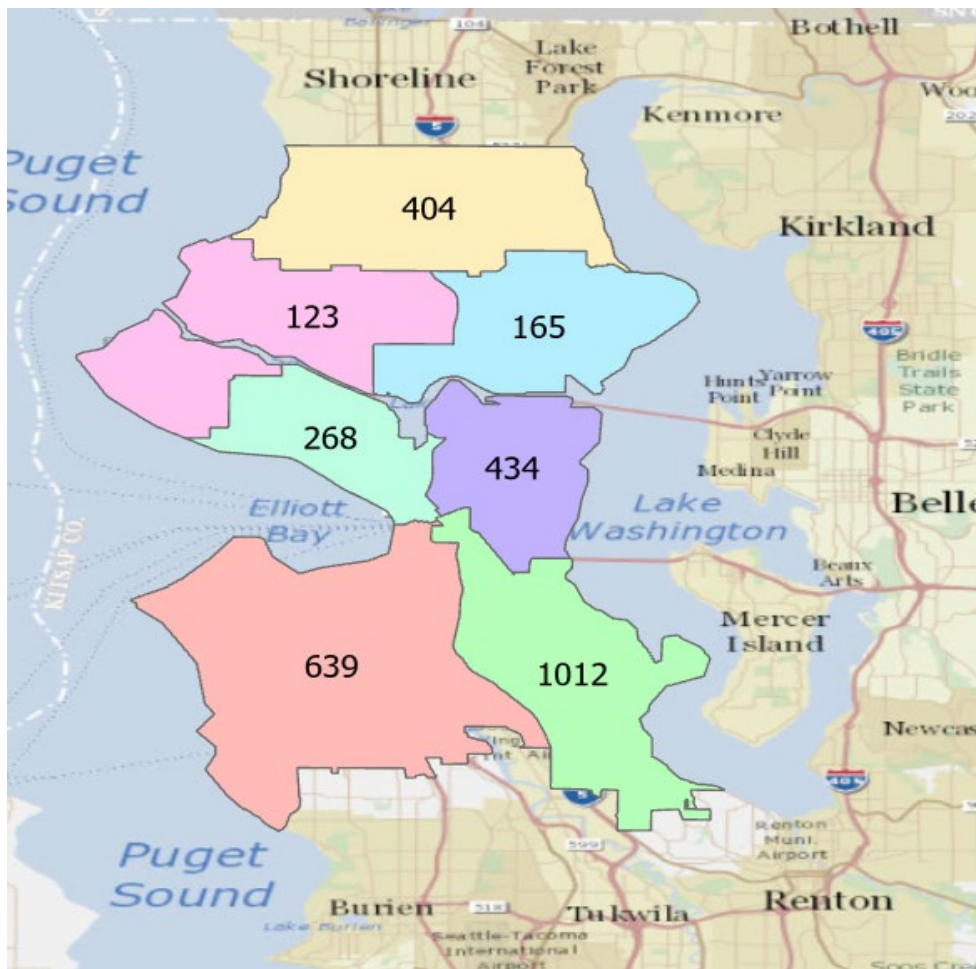


*Map and data provided by King County Prosecuting Attorney's Office

King County Council District	Councilmember	Gun Offenses (N = 8,805)
1	Rod Dembowski	473
2	Girmay Zahilay	1,470
3	Sarah Perry	110
4	Jorge Baron	503
5	Dave Upthegrove	2,080
6	Claudia Balducci	137
7	Pete von Reichbauer	1,504
8	Teresa Mosqueda	2,060
9	Reagan Dunn	468

Map 2 shows the distribution of gun offenses in Seattle City Council Districts. Seattle City Council District 2 experienced the highest number of gun offenses – 1,012 total, which accounted for 33.2% of the total gun offenses that occurred in this district. Seattle City Council District 1 had the next highest number of gun offenses, with 639.

Map 2. All Gun Offenses in Seattle City Council Districts (Jan 01, 2021 – Dec 31, 2023) (N = 3,045)



*Map and data provided by King County Prosecuting Attorney's Office

Seattle City Council District	Councilmember	Gun Offenses (N = 3,045)
1	Rob Saka	639
2	Tammy Morales	1,012
3	Joy Hollingsworth	434
4	Maritza Rivera	165
5	Cathy Moore	404
6	Dan Strauss	123
7	Robert Kettle	268

Gun Violence Trends in Seattle vs. King County

Tables 1 through 3 display a breakdown of gun violence incidents (GVIs) in King County (Table 1), Seattle (Table 2), and other cities in King County (Table 3) across crime types and years.

Between January 1, 2021, and September 5, 2024, there were 7,191 GVIs in King County.

Seattle experienced 2,806 GVIs (39% of all GVIs in King County), while other King County cities collectively experienced 4,385 GVIs (61% of all GVIs in King County). GVIs that resulted in a fatal or nonfatal gunshot wound accounted for a higher percentage of the total GVIs in Seattle compared to King County overall as well as the other cities in King County. Specifically, of the 2,806 GVIs in Seattle, 24% resulted in a gunshot wound. In King County, 20% resulted in a gunshot wound, and in other King County cities, 18% resulted in a gunshot wound.

Table 1 shows that across King County, gun violence increased 41% between 2021 and 2023, with shots fired incidents being the most common type of gun violence, representing over 34% of incidents each year. Table 2 shows that Seattle saw a 66% increase in gun violence between 2021 and 2023, with shots fired incidents accounting for the highest percentage (over 37%) of gun violence incidents each year. Table 3 highlights that between 2021 and 2023, gun violence rose 28% in other King County cities – from 1,064 incidents in 2021 to 1,364 incidents in 2023; shots fired incidents represented the largest percentage of gun violence, representing over 30% of incidents each year.

Table 1. Gun Crime Type by Percentage of All Gun Crime in King County (Jan 1, 2021 – Sept 5, 2024) (N = 7,191)

Gun Crime Type	2021	%	2022	%	2023	%	2024	%	Total	%
Armed Robbery	224	13.84%	308	15.82%	580	25.39%	261	19.46%	1,373	19.09%
Shots Fired	566	34.96%	845	43.40%	811	35.51%	481	35.87%	2,703	37.59%
Shots Homicide	86	5.31%	81	4.16%	96	4.20%	52	3.88%	315	4.38%
Shots Injury	315	19.46%	317	16.28%	323	14.14%	193	14.39%	1,148	15.96%
Shots Property	428	26.44%	396	20.34%	474	20.75%	354	26.40%	1,652	22.97%
Total	1,619		1,947		2,284		1,341		7,191	

Table 2. Gun Crime Type by Percentage of All Gun Crime in Seattle (Jan 1, 2021 – Sept 5, 2024) (N = 2,806)

Gun Crime Type	2021	%	2022	%	2023	%	2024	%	Total	%
Armed Robbery	15	2.70%	45	6.26%	183	19.89%	103	16.83%	346	12.33%
Shots Fired	241	43.42%	351	48.82%	344	37.39%	233	38.07%	1,169	41.66%
Shots Homicide	29	5.23%	38	5.29%	41	4.46%	25	4.08%	133	4.74%
Shots Injury	131	23.60%	143	19.89%	157	17.07%	108	17.65%	539	19.21%
Shots Property	139	25.05%	142	19.75%	195	21.20%	143	23.37%	619	22.06%
Total	555		719		920		612		2,806	

**Table 3. Gun Crime Type by Percentage of All Gun Crime in Other Cities in King County
(Jan 1, 2021 – Sept 5, 2024) (N = 4,385)**

Gun Crime Type	2021	%	2022	%	2023	%	2024	%	Total	%
Armed Robbery	209	19.64%	263	21.42%	397	29.11%	158	21.67%	1,027	23.42%
Shots Fired	325	30.55%	494	40.23%	467	34.24%	248	34.02%	1,534	34.98%
Shots Homicide	57	5.36%	43	3.50%	55	4.03%	27	3.70%	182	4.15%
Shots Injury	184	17.29%	174	14.17%	166	12.17%	85	11.66%	609	13.89%
Shots Property	289	27.16%	254	20.68%	279	20.45%	211	28.94%	1,033	23.56%
Total	1,064		1,228		1,364		729		4,385	

Table 4 presents a comparison of gun violence incidents between Seattle and other King County cities. Most GVIs in King County occurred outside of Seattle (61% vs. 39%). However, Seattle experienced a disproportionate amount of gun violence. In 2023, the gun violence rate was 1.25 per 1,000 individuals in Seattle, while the county gun violence rate was 1.01 per 1,000 individuals.⁴ Table 4 shows that nonfatal shootings (shots injury) exhibited the smallest difference between Seattle and other King County cities of all gun violence types. Of 1,652 nonfatal shootings, 47% occurred in Seattle, and 53% occurred in other King County cities.

⁴ The gun violence rates were calculated using the 2020 US Census Bureau's population estimates:
https://data.census.gov/profile/King_County,_Washington?g=050XX00US53033
https://data.census.gov/profile/Seattle_city,_Washington?g=160XX00US5363000

Table 4. Gun Violence Types: Overall Number and Prevalence in Seattle vs. Other KC Cities (Jan 1, 2021 – Sept 5, 2024) (N = 7,191)

Gun Crime Type	2021	%	2022	%	2023	%	2024	%	Total	%
Armed Robbery	224		308		580		261		1,373	
Total										
Other KC cities	209	93.30%	263	85.39%	397	68.45%	158	60.54%	1,027	74.80%
Seattle	15	6.70%	45	14.61%	183	31.55%	103	39.46%	346	25.20%
Shots Fired Total	566		845		811		481		2,703	
Other KC cities	325	57.42%	494	58.46%	467	57.58%	248	51.56%	1,534	56.75%
Seattle	241	42.58%	351	41.54%	344	42.42%	233	48.44%	1,169	43.25%
Shots Homicide	86		81		96		52		315	
Total										
Other KC cities	57	66.28%	43	53.09%	55	57.29%	27	51.92%	182	57.78%
Seattle	29	33.72%	38	46.91%	41	42.71%	25	48.08%	133	42.22%
Shots Injury	315		317		323		193		1,148	
Total										
Other KC cities	184	58.41%	174	54.89%	166	51.39%	85	44.04%	609	53.05%
Seattle	131	41.59%	143	45.11%	157	48.61%	108	55.96%	539	46.95%
Shots Property	428		396		474		354		1,652	
Total										
Other KC cities	289	67.52%	254	64.14%	279	58.86%	211	59.60%	1,033	62.53%
Seattle	139	32.48%	142	35.86%	195	41.14%	143	40.40%	619	37.47%
Gun Violence	1,619		1,947		2,284		1,341		7,191	
Total										
Other KC cities	1,064	65.72%	1228	63.07%	1,364	59.72%	729	54.36%	4,385	60.98%
Seattle	555	34.28%	719	36.93%	920	40.28%	612	45.64%	2,806	39.02%

Monthly Trends in Gun Violence in Seattle vs. King County

Tables 5 through 9 display the monthly trends in gun violence incidents during the years examined, comparing Seattle with other King County cities. Gun-related homicide peaked during the summer months for both Seattle and other King County cities (See Table 5). In Seattle, the highest monthly average for gun-related homicides was 5.5 in June, while in other King County cities, the highest monthly gun-related homicide average was 7.0 in July.

Nonfatal shootings also rose during the summer months (See Table 6). In Seattle, the monthly average for nonfatal shootings was the highest in August at 17.8, and the highest monthly average was in July for other King County cities at 16.0. The monthly average for shots fired property incidents was highest in July for both Seattle and other King County cities, with averages of 20.8 and 32.5 incidents, respectively (Table 7).

July also contained the highest average shots fired incidents in Seattle and other King County cities (Table 8). In Seattle, the average was 33.0 shots fired incidents; in other King County cities, the average was 43.8 incidents.

Lastly, the monthly averages for armed robberies were highest in the fall months in Seattle and other King County cities (Table 9). Armed robberies were highest in October in Seattle, with a monthly average of 14.3 incidents. In other King County cities, the highest monthly average for armed robberies was in November, with an average of 38.0 incidents⁵.

⁵ The monthly averages for months September through November were calculated using the years 2021 through 2023 because data for 2024 were not yet available as the report was produced in September 2024. The monthly averages for September through November will be different after the data for 2024 is collected through the end of the year.

Table 5. Homicide by Month and Year, Seattle vs. Other King County Cities (Jan 1, 2021 – Sept 5, 2024) (N = 315)

	2021			2022			2023			2024			Seattle Monthly Average	Other KC Monthly Average	Total Monthly Average
	Seattle	Other KC Cities	2021 Total	Seattle	Other KC Cities	2022 Total	Seattle	Other KC Cities	2023 Total	Seattle	Other KC Cities	2024 Total			
Shots Homicide															
January	2	2	4	3	3	6	3	3	6	3	5	8	2.8	3.3	6.0
February	1	1	2	3	5	8	2	4	6	2	4	6	2.0	3.5	5.5
March	3	8	11	4	2	6	3	5	8	4	3	7	3.5	4.5	8.0
April	1	3	4	4	2	6	3	3	6	0	2	2	2.0	2.5	4.5
May	2	3	5	1	3	4	6	9	15	3	4	7	3.0	4.8	7.8
June	7	4	11	6	3	9	3	9	12	6	3	9	5.5	4.8	10.3
July	4	11	15	3	7	10	6	6	12	3	4	7	4.0	7.0	11.0
August	4	3	7	6	5	11	5	2	7	4	1	5	4.8	2.8	7.5
September	2	6	8	3	4	7	6	2	8	0	1	1	3.7	4.0	7.7
October	2	4	6	2	2	4	3	4	7	-	-	-	2.3	3.3	5.7
November	1	6	7	2	7	9	1	5	6	-	-	-	1.3	6.0	7.3
December	0	6	6	1	0	1	0	3	3	-	-	-	0.3	3.0	3.3
Total	29	57	86	38	43	81	41	55	96	25	27	52			

*Note the monthly averages for September through December include the years 2021 through 2023; Total averages may be computed after December 2024

Table 6. Shots Injury by Month and Year, Seattle vs. Other King County Cities (Jan 1, 2021 – Sept 5, 2024) (N = 1,148)

	2021		2022		2023		2024		Seattle Monthly Average	Other KC Monthly Average	Total Monthly Average				
	Seattle	Other KC Cities	2021 Total	Seattle	Other KC Cities	2022 Total	Seattle	Other KC Cities				2023 Total	Seattle	Other KC Cities	2024 Total
Shots Injury															
January	5	11	16	12	9	21	8	16	24	12	12	24	9.3	12.0	21.3
February	2	10	12	16	22	38	5	9	14	13	18	31	9.0	14.8	23.8
March	4	12	16	11	17	28	6	8	14	8	6	14	7.3	10.8	18.0
April	8	11	19	8	14	22	9	13	22	6	8	14	7.8	11.5	19.3
May	15	14	29	10	15	25	20	17	37	12	13	25	14.3	14.8	29.0
June	12	16	28	11	14	25	19	22	41	22	8	30	16.0	15.0	31.0
July	15	22	37	14	13	27	15	20	35	20	9	29	16.0	16.0	32.0
August	20	23	43	19	16	35	20	13	33	12	9	21	17.8	15.3	33.0
September	11	17	28	9	12	21	13	17	30	3	2	5	11.0	15.3	26.3
October	16	15	31	15	18	33	16	11	27	-	-	-	15.7	14.7	30.3
November	7	21	28	11	18	29	14	6	20	-	-	-	10.7	15.0	25.7
December	16	12	28	7	6	13	12	14	26	-	-	-	11.7	10.7	22.3
Total	131	184	315	143	174	317	157	166	323	108	85	193			

*Note the monthly averages for September through December include the years 2021 through 2023; Total averages may be computed after December 2024

Table 7. Shots Property by Month and Year, Seattle vs. Other King County Cities (Jan 1, 2021 – Sept 5, 2024) (N = 1,652)

	2021			2022			2023			2024					
	Seattle	Other KC Cities	2021 Total	Seattle	Other KC Cities	2022 Total	Seattle	Other KC Cities	2023 Total	Seattle	Other KC Cities	2024 Total	Seattle Monthly Average	Other KC Monthly Average	Total Monthly Average
Shots Property															
January	11	26	37	21	23	44	12	19	31	11	34	45	13.8	25.5	39.3
February	5	13	18	14	20	34	15	9	24	15	28	43	12.3	17.5	29.8
March	10	18	28	11	28	39	9	13	22	31	32	63	15.3	22.8	38.0
April	6	17	23	13	30	43	9	20	29	13	13	26	10.3	20.0	30.3
May	8	16	24	12	28	40	21	33	54	13	24	37	13.5	25.3	38.8
June	13	23	36	8	18	26	9	21	30	19	25	44	12.3	21.8	34.0
July	15	37	52	12	37	49	34	32	66	22	24	46	20.8	32.5	53.3
August	14	30	44	15	16	31	18	32	50	16	28	44	15.8	26.5	42.3
September	14	35	49	7	14	21	13	21	34	3	3	6	11.3	23.3	34.7
October	18	30	48	9	13	22	22	24	46	-	-	-	16.3	22.3	38.7
November	10	25	35	8	14	22	21	23	44	-	-	-	13.0	20.7	33.7
December	15	19	34	12	13	25	12	32	44	-	-	-	13.0	21.3	34.3
Total	139	289	428	142	254	396	195	279	474	143	211	354			

*Note the monthly averages for September through December include the years 2021 through 2023; Total averages may be computed after December 20

Table 8. Shots Fired by Month and Year, Seattle vs. Other King County Cities (Jan 1, 2021 – Sept 5, 2024) (N = 2,703)

Shots Fired	2021		2021 Total	2022		2022 Total	2023		2023 Total	2024		2024 Total	Seattle Monthly Average	Other KC Monthly Average	Total Monthly Average
	Seattle	Other KC Cities		Seattle	Other KC Cities		Seattle	Other KC Cities		Seattle	Other KC Cities				
January	16	28	44	26	21	47	31	56	87	35	41	76	27.0	36.5	63.5
February	8	16	24	15	32	47	36	32	68	20	29	49	19.8	27.3	47.0
March	12	22	34	25	41	66	25	28	53	28	35	63	22.5	31.5	54.0
April	17	36	53	32	29	61	27	36	63	28	25	53	26.0	31.5	57.5
May	17	21	38	38	62	100	27	42	69	30	21	51	28.0	36.5	64.5
June	25	28	53	26	40	66	32	49	81	30	36	66	28.3	38.3	66.5
July	38	42	80	36	49	85	28	52	80	30	32	62	33.0	43.8	76.8
August	30	26	56	33	36	69	27	48	75	28	27	55	29.5	34.3	63.8
September	22	32	54	38	41	79	31	31	62	4	2	6	30.3	34.7	65.0
October	20	29	49	38	42	80	29	34	63	-	-	-	29.0	35.0	64.0
November	16	26	42	21	51	72	25	32	57	-	-	-	20.7	36.3	57.0
December	20	19	39	23	50	73	26	27	53	-	-	-	23.0	32.0	55.0
Total	241	325	566	351	494	845	344	467	811	233	248	481			

*Note the monthly averages for September through December include the years 2021 through 2023; Total averages may be computed after December 2024

Table 9. Armed Robbery by Month and Year, Seattle vs. Other King County Cities (Jan 1, 2021 – Sept 5, 2024) (N = 1, 373)

	2021			2022			2023			2024					
	Seattle	Other KC Cities	2021 Total	Seattle	Other KC Cities	2022 Total	Seattle	Other KC Cities	2023 Total	Seattle	Other KC Cities	2024 Total	Seattle Monthly Average	Other KC Monthly Average	Total Monthly Average
Armed Robbery															
January	1	17	18	2	19	21	12	32	44	19	31	50	8.5	24.8	33.3
February	1	12	13	0	18	18	10	39	49	12	19	31	5.8	22.0	27.8
March	4	16	20	0	24	24	3	29	32	13	30	43	5.0	24.8	29.8
April	0	11	11	2	24	26	5	23	28	11	23	34	4.5	20.3	24.8
May	1	9	10	1	20	21	3	40	43	9	14	23	3.5	20.8	24.3
June	0	9	9	7	19	26	14	42	56	13	9	22	8.5	19.8	28.3
July	0	17	17	1	14	15	19	26	45	18	19	37	9.5	19.0	28.5
August	1	14	15	1	21	22	13	33	46	6	9	15	5.3	19.3	24.5
September	3	21	24	1	4	5	29	41	70	2	4	6	11.0	22.0	33.0
October	0	23	23	6	26	32	37	41	78	-	-	-	14.3	30.0	44.3
November	2	34	36	10	52	62	17	28	45	-	-	-	9.7	38.0	47.7
December	2	26	28	14	22	36	21	23	44	-	-	-	12.3	23.7	36.0
Total	15	209	224	45	263	308	183	397	580	103	158	261			

*Note the monthly averages for September through December include the years 2021 through 2023; Total averages may be computed after December 2024

Gun Violence in Locations Across Years

Table 10 shows the sum of GVIs at various locations in King County, including apartments or mobile homes, bars or nightclubs, churches or non-profits, convenience stores or gas stations, government areas, homeless encampments, hotels or motels, industrial or commercial areas, intersections or roadways,⁶ medical or treatment centers, residential locations, retail places or businesses, and transit centers or public transportation places. The number of GVIs at each location is presented for each year from 2021 to 2024, along with the yearly averages. As Table 10 highlights, in King County, gun violence most frequently occurred outside the home (excluding intersections or roadways) at retail places or businesses, convenience stores or gas stations, public parks or community centers, bars or nightclubs, and homeless encampments. There was an average of 277.3 GVIs each year at retail places or businesses. The average yearly number of GVIs at convenience stores or gas stations was 146.3, and the yearly average of GVIs at public parks or community centers was 97.7. The yearly average number of GVIs was 52.3 at bars or nightclubs and 45.3 at homeless encampments. Altogether, of the 7,191 total GVIs in King County between January 1, 2021, and September 5, 2024, 13.7% occurred at retail places or businesses, 7.4% occurred at convenience stores or gas stations, 5.0% occurred at public parks or community centers, 2.6% occurred at bars or nightclubs, and 2.1% occurred at homeless encampments.

Table 11 compares the locations of GVIs between Seattle and other King County cities. Gun violence more frequently occurred at homeless encampments and public parks or community centers in Seattle compared to other King County cities. Indeed, of 150 total GVIs that occurred at homeless encampments, 89.3% occurred in Seattle. Similarly, of the 362 incidents that took place at public parks or community centers, 59.4% were in Seattle.

⁶ It is important to note when officers record incidents, they often record the incident as having occurred at the closest intersection or roadway, so the number of gun violence incidents in intersections or roadways is inflated.

Table 10. King County Gun Violence Location Type by Year (Jan 1, 2021 – September 5, 2024) (N = 7,191)

Location Type	2021	% 2021 Total Gun Violence	2022	% 2022 Total Gun Violence	2023	% 2023 Total Gun Violence	2024	% 2024 Total Gun Violence	Total	% 21-24 Total Gun Violence	Yearly Avg
Apartment/Mobile Home	283	17.48%	306	15.72%	394	17.25%	243	18.12%	1226	17.05%	327.7
Bar/Nightclub	44	2.72%	55	2.82%	58	2.54%	30	2.24%	187	2.60%	52.3
Church/Non-Profit	6	0.37%	7	0.36%	7	0.31%	4	0.30%	24	0.33%	6.7
Convenience Store/Gas Station	94	5.81%	107	5.50%	238	10.42%	91	6.79%	530	7.37%	146.3
Government	2	0.12%	5	0.26%	3	0.13%	3	0.22%	13	0.18%	3.3
Homeless Encampment	40	2.47%	57	2.93%	39	1.71%	14	1.04%	150	2.09%	45.3
Hotel/Motel	37	2.29%	31	1.59%	25	1.09%	9	0.67%	102	1.42%	31.0
Industrial/Commercial	0	0.00%	4	0.21%	0	0.00%	0	0.00%	4	0.06%	1.3
Intersection/Roadway	461	28.47%	588	30.20%	508	22.24%	291	21.70%	1848	25.70%	519.0
Medical/Treatment	20	1.24%	12	0.62%	15	0.66%	16	1.19%	63	0.88%	15.7
Public Park/Community Center	95	5.87%	102	5.24%	96	4.20%	69	5.15%	362	5.03%	97.7
Residential/Other	268	16.55%	341	17.51%	530	23.20%	390	29.08%	1529	21.26%	379.7
Retail/Business	222	13.71%	292	15.00%	318	13.92%	152	11.33%	984	13.68%	277.3
School	17	1.05%	9	0.46%	19	0.83%	10	0.75%	55	0.76%	15.0
Transit Center/Public Transportation	19	1.17%	25	1.28%	33	1.44%	18	1.34%	95	1.32%	25.7
Missing	11	0.68%	6	0.31%	1	0.04%	1	0.07%	19	0.26%	6.0
Total	1,619		1,947		2,284		1,341		7,191		

*Note the yearly averages include the years 2021 through 2023. Averages including 2024 may be computed after December 2024.

Table 11. Gun Violence Location Type in Seattle and Other King County Cities (Jan 1, 2021 – Sept 5, 2024) (N = 7,191)

Locations	Seattle	%	Other KC cities	%	Total
Apartment/Mobile Home	277	22.59%	949	77.41%	1,226
Bar/Nightclub	90	48.13%	97	51.87%	187
Church/Non-Profit	4	16.67%	20	83.33%	24
Convenience Store/Gas Station	115	21.70%	415	78.30%	530
Government	5	38.46%	8	61.54%	13
Homeless Encampment	134	89.33%	16	10.67%	150
Hotel/Motel	27	26.47%	75	73.53%	102
Industrial/Commercial	1	25.00%	3	75.00%	4
Intersection/Roadway	990	53.57%	858	46.43%	1,848
Medical/Treatment	23	36.51%	40	63.49%	63
Public Park/Community Center	215	59.39%	147	40.61%	362
Residential/Other	533	34.86%	996	65.14%	1,529
Retail/Business	330	33.54%	654	66.46%	984
School	16	29.09%	39	70.91%	55
Transit Center/Public Transportation	37	38.95%	58	61.05%	95
Missing	9	47.37%	10	52.63%	19
Total	2,806	39.02%	4,385	60.98%	7,191

Prevalence of Gun Violence at Specific Locations

Gun violence most frequently occurred at retail places or businesses, convenience stores or gas stations, public parks or community centers, bars or nightclubs, and homeless encampments. Table 12 shows the prevalence of GVIs at these various places across months and years in Seattle. Altogether, 884 GVIs occurred at these locations in Seattle between January 1, 2021, and September 5, 2024. Table 12 shows that between 2021 and 2023, GVIs increased at bars or nightclubs, convenience stores or gas stations, public parks or community centers, and retail places or businesses. However, GVIs decreased between 2021 and 2022 before increasing in 2023 at convenience stores or gas stations and public parks or community centers. The number of GVIs at homeless encampments increased between 2021 and 2022, but then the monthly average decreased between 2022 and 2023, which was lower than the monthly average in 2021. It is worth noting that the monthly averages for gun violence at retail places or businesses, convenience stores or gas stations, public parks or community centers, and bars or nightclubs were highest in 2023. The monthly average of GVIs at homeless encampments was highest in 2022.

Table 13 shows the prevalence of GVIs in retail places or businesses, convenience stores or gas stations, public parks or community centers, bars or nightclubs, and hotels or motels in King County cities other than Seattle. While gun violence incidents at homeless encampments were not as prevalent in the other King County cities as they were in Seattle, these cities experienced a significant number of GVIs at hotels or motels. Specifically, a total of 102 GVIs took place at a hotel or motel in Kings County, and 73.5% of these incidents occurred in cities other than Seattle (See Table 11). For this reason, Table 13 includes hotels or motels and excludes homeless encampments. In total, 1,388 GVIs occurred in one of the five specified locations. Between 2021 and 2023, gun violence increased at bars or nightclubs and convenience stores or gas stations. Gun violence increased in public parks or community centers and retail places or businesses between 2021 and 2022 but then decreased between 2022 and 2023. In motels or hotels, gun violence decreased annually between 2021 and 2023. The monthly gun violence averages at bars or nightclubs and convenience stores or gas stations were highest in 2023. The monthly gun violence average was highest for hotels or motels in 2021, the monthly gun violence average was highest for retail places or businesses in 2022, and the monthly gun violence average for public parks or community centers was highest in 2022.

Table 12. Select Gun Violence Locations by Month and Year in Seattle (Jan 1, 2021 – Sept 5, 2024) (n = 884)

Seattle	Month												Total	Monthly Avg	Difference in Monthly Avg
	Jan	Feb	Mar	Apr	May	Jun	July	Aug	Sep	Oct	Nov	Dec			
Bar/Nightclub	7	3	6	6	7	6	14	17	7	4	5	8	90		
2021	0	0	0	2	1	0	4	6	4	0	2	2	21	1.75	
2022	3	0	0	4	2	2	5	3	1	3	0	2	25	2.08	0.33
2023	3	1	1	0	2	3	3	4	2	1	3	4	27	2.25	0.17
2024	1	2	5	0	2	1	2	4	0	-	-	-	17		
Convenience Store/Gas Station	10	4	4	9	3	15	16	19	6	16	7	6	115		
2021	2	1	1	1	0	2	4	3	0	3	1	1	19	1.58	
2022	1	0	0	0	1	1	1	5	2	1	2	3	17	1.42	-0.16
2023	1	1	0	5	0	10	7	5	4	12	4	2	51	4.25	2.83
2024	6	2	3	3	2	2	4	6	0	-	-	-	28		
Homeless Encampment	11	13	14	10	11	16	14	12	9	12	7	5	134		
2021	1	1	2	2	4	1	5	3	3	9	4	3	38	3.17	
2022	7	6	10	7	3	7	4	4	3	1	1	1	54	4.50	1.33
2023	2	4	0	1	3	6	1	5	3	2	2	1	30	2.50	-2.00
2024	1	2	2	0	1	2	4	0	0	-	-	-	12		
Public Park/Community Center	20	9	15	18	30	24	28	27	14	18	4	8	215		
2021	2	1	4	3	5	8	9	11	6	3	2	4	58	4.83	
2022	4	1	4	6	5	5	7	4	2	9	2	3	52	4.33	-0.50
2023	5	4	2	5	16	3	5	7	5	6	0	1	59	4.92	0.59
2024	9	3	5	4	4	8	7	5	1	-	-	-	46		
Retail/Business	34	18	28	18	26	27	41	24	28	32	23	31	330		
2021	3	2	7	2	1	3	6	4	5	9	4	7	53	4.42	
2022	8	4	8	4	8	6	8	7	6	11	11	9	90	7.50	3.08
2023	13	5	10	7	10	6	15	6	14	12	8	15	121	10.08	2.58
2024	10	7	3	5	7	12	12	7	3	-	-	-	66		
Total	82	47	67	61	77	88	113	99	64	82	46	58	884		

Table 13. Select Gun Violence Locations by Month and Year in Other King County Cities (Jan 1, 2021 – Sept 5, 2024) (n = 1,388)

Other KC Cities	Month												Total	Monthly Avg	Difference in Monthly Avg
	Jan	Feb	Mar	Apr	May	Jun	Jul	Aug	Sep	Oct	Nov	Dec			
Bar/Nightclub	8	6	7	6	11	13	13	8	6	10	4	5	97		
2021	1	2	2	1	2	2	3	1	2	4	1	2	23	1.92	
2022	0	1	1	1	5	7	5	2	3	3	2	0	30	2.50	0.58
2023	5	1	2	2	3	4	4	2	1	3	1	3	31	2.58	0.08
2024	2	2	2	2	1	0	1	3		-	-	-	13		
Convenience Store/Gas Station	34	34	43	34	43	36	30	24	31	30	43	33	415		
2021	5	3	9	7	2	2	5	3	11	8	9	11	75	6.25	
2022	5	5	8	10	8	2	2	5	4	8	21	12	90	7.50	1.25
2023	14	19	14	12	24	25	17	11	14	14	13	10	187	15.58	8.08
2024	10	7	12	5	9	7	6	5	2	-	-	-	63		
Hotel/Motel	8	5	4	9	4	9	10	3	3	7	7	6	75		
2021	3	2	4	3	1	3	3	2	2	2	3	2	30	2.50	
2022	1	2	0	3	0	2	3	0	1	1	4	3	20	1.67	-0.83
2023	3	1	0	2	3	0	2	1	0	4	0	1	17	1.42	-0.25
2024	1	0	0	1	0	4	2	0	0	-	-	-	8		
Public Park/Community Center	9	8	9	12	13	22	24	15	8	15	9	3	147		
2021	2	1	2	7	2	5	5	3	4	4	2	0	37	3.08	
2022	1	3	2	3	6	6	8	5	2	7	5	2	50	4.17	1.09
2023	3	2	4	0	1	4	9	5	2	4	2	1	37	3.08	-1.09
2024	3	2	1	2	4	7	2	2		-	-	-	23		
Retail/Business	64	51	67	49	61	48	68	38	42	45	74	47	654		
2021	11	9	14	9	8	7	18	9	22	14	29	19	169	14.08	
2022	15	17	22	14	18	18	21	14	4	13	31	15	202	16.83	2.75
2023	23	13	16	11	24	18	19	13	15	18	14	13	197	16.42	-0.41
2024	15	12	15	15	11	5	10	2	1	-	-	-	86		
Total	123	104	130	110	132	128	145	88	90	107	137	94	1,388		

2024 Gun Violence Distribution in Seattle Zip Codes

Table 14 displays the sum of GVIs per Seattle zip code, in order of the number of incidents⁷. Seattle zip code 98118 experienced 493 GVIs between January 1, 2021, and September 5, 2024, which was higher than any other zip code in Seattle. The top five zip codes in terms of the highest number of GVIs experienced more than 50% of the total GVIs between January 1, 2021, and September 5, 2024. These zip codes include 98118, 98144, 98104, 98122, and 98108. During this time frame, 274 incidents were recorded in 98144, 224 incidents in 98104, 219 incidents in 98122, and 194 incidents in 98108. It is important to note that GVIs disproportionately occurred in these five zip codes across all years examined, accounting for 55.3% of all GVIs in 2021, 47.2% in 2022, 50.3% in 2023, and 48.2% through September 5, 2024.

Table 15 shows the five zip codes with the highest number of GVIs, highlighting the sum of gun violence incidents at bars or nightclubs, convenience stores or gas stations, homeless encampments, public parks or community centers, and retail places or businesses. Specifically, this analysis used data from January 1, 2021, through September 5, 2024 and showed that 1,404 incidents took place in the top five zip codes. Of these incidents, 435 (or 31.0%) occurred in one of the five examined locations.

The selected gun violence locations revealed interesting patterns among the top five zip codes. In the zip code with the highest number of GVIs, 98118, there were 56 incidents at retail places or businesses, which was higher than the number of incidents that occurred at bars or nightclubs (4 incidents), convenience stores or gas stations (17 incidents), homeless encampments (5 incidents), and public parks or community centers (43 incidents). In 98104, of the five location types, homeless encampments experienced the highest number of GVIs, with 36 reported incidents. The zip code with the third-highest number of GVIs, 98144, experienced more incidents at public parks or community centers (36 incidents) than the other four location types. In 98122, the number of GVIs was highest at retail places or businesses, with 34 reported incidents. Finally, the zip code with the fifth-highest number of GVIs, 98108, experienced 13 incidents at homeless encampments, higher than that experienced in the other four location types.

⁷ Originally, the goal was to examine the specific location names to better understand which businesses, bars, and gas stations, etc. experienced a disproportionate amount of gun violence incidents. However, given the format of the data and time constraints, this was unattainable for the gun violence audit. Future assessments should identify the specific locations where gun violence is concentrated, which can provide areas for future prevention and intervention strategies.

Table 14. Gun Violence in Seattle Zip Codes by Yearly Breakdown (Jan 1, 2021 – Sept 5, 2024) (N = 2,806)

Zip Code	2021	% 2021	2022	% 2022	2023	% 2023	2024	% 2024	Total	% Total
98118	123	22.16%	113	15.72%	167	18.15%	90	14.71%	493	17.57%
98144	60	10.81%	48	6.68%	101	10.98%	65	10.62%	274	9.76%
98104	44	7.93%	74	10.29%	64	6.96%	42	6.86%	224	7.98%
98122	42	7.57%	51	7.09%	70	7.61%	56	9.15%	219	7.80%
98108	38	6.85%	53	7.37%	61	6.63%	42	6.86%	194	6.91%
98133	32	5.77%	40	5.56%	51	5.54%	55	8.99%	178	6.34%
98106	30	5.41%	46	6.40%	48	5.22%	34	5.56%	158	5.63%
98125	30	5.41%	26	3.62%	34	3.70%	27	4.41%	117	4.17%
98103	20	3.60%	27	3.76%	34	3.70%	24	3.92%	105	3.74%
98126	15	2.70%	19	2.64%	28	3.04%	22	3.59%	84	2.99%
98105	14	2.52%	32	4.45%	21	2.28%	16	2.61%	83	2.96%
98101	18	3.24%	19	2.64%	29	3.15%	16	2.61%	82	2.92%
98134	5	0.90%	32	4.45%	24	2.61%	19	3.10%	80	2.85%
98178	12	2.16%	10	1.39%	30	3.26%	14	2.29%	66	2.35%
98116	9	1.62%	19	2.64%	21	2.28%	14	2.29%	63	2.25%
98115	8	1.44%	9	1.25%	23	2.50%	13	2.12%	53	1.89%
98121	7	1.26%	16	2.23%	20	2.17%	10	1.63%	53	1.89%
98109	13	2.34%	11	1.53%	15	1.63%	9	1.47%	48	1.71%
98117	7	1.26%	9	1.25%	18	1.96%	13	2.12%	47	1.67%
98107	5	0.90%	16	2.23%	13	1.41%	5	0.82%	39	1.39%
98102	7	1.26%	12	1.67%	12	1.30%	3	0.49%	34	1.21%
98119	5	0.90%	12	1.67%	9	0.98%	4	0.65%	30	1.07%
98112	3	0.54%	7	0.97%	12	1.30%	5	0.82%	27	0.96%
98136	2	0.36%	5	0.70%	8	0.87%	2	0.33%	17	0.61%
98199	2	0.36%	4	0.56%	3	0.33%	2	0.33%	11	0.39%
98177	1	0.18%	1	0.14%	0	0.00%	3	0.49%	5	0.18%
98188	0	0.00%	2	0.28%	0	0.00%	3	0.49%	5	0.18%
98146	1	0.18%	0	0.00%	1	0.11%	2	0.33%	4	0.14%
98114	0	0.00%	2	0.28%	0	0.00%	1	0.16%	3	0.11%
98168	1	0.18%	0	0.00%	1	0.11%	1	0.16%	3	0.11%
98155	1	0.18%	1	0.14%	0	0.00%	0	0.00%	2	0.07%
98004	0	0.00%	1	0.14%	0	0.00%	0	0.00%	1	0.04%
98012	0	0.00%	0	0.00%	1	0.11%	0	0.00%	1	0.04%
98013	0	0.00%	1	0.14%	0	0.00%	0	0.00%	1	0.04%
98181	0	0.00%	0	0.00%	1	0.11%	0	0.00%	1	0.04%
98195	0	0.00%	1	0.14%	0	0.00%	0	0.00%	1	0.04%
Total	555		719		920		612		2,806	

Table 15. Seattle Zip Codes with the Highest Number of Gun Violence Incidents Categorized by Selected Locations (Jan 1, 2021 – Sept 5, 2024) (n = 435 of 1,404 incidents)

Zip Code	Bar/Nightclub	Convenience Store/Gas Station	Homeless Encampment	Public Park/Community Center	Retail/Business	Select Location Total/ Total Gun Violence Incidents
98118	4	17	5	43	56	125/493
2021	1	4	4	13	10	32
2022	1	5	0	8	13	27
2023	1	7	1	13	23	45
2024	1	1	0	9	10	21
98104	20	4	36	16	29	105/224
2021	5	3	7	5	5	25
2022	7	1	16	9	10	43
2023	3	0	10	0	9	22
2024	5	0	3	2	5	15
98144	6	9	15	36	25	91/274
2021	4	2	2	10	5	23
2022	0	0	6	5	4	15
2023	2	4	5	9	9	29
2024	0	3	2	12	7	24
98122	6	12	2	19	34	73/219
2021	1	2	2	8	4	17
2022	1	1	0	5	11	18
2023	3	4	0	5	11	23
2024	1	5	0	1	8	15
98108	2	6	13	8	12	41/194
2021	1	1	2	4	1	9
2022	1	0	6	2	2	11
2023	0	4	2	2	6	14
2024	0	1	3	0	3	7
Total	38	48	71	122	156	435/1,404

2024 Gun Violence Locations by Day of Week and Time in Seattle

Tables 16 and 17 provide more detailed analyses of GVIs in Seattle between January 1, 2024, and September 5, 2024. Table 16 displays the number of GVIs across all location types per day of the week. Altogether, most of the gun violence incidents occurred on Sunday, with 127 or 20.8% of incidents reported on this day. Of the selected gun violence locations, both convenience stores or gas stations and retail places or businesses experienced the highest number of gun violence incidents on a Sunday. GVIs at homeless encampments occurred more on Mondays than other days of the week. Regarding GVIs at public parks or community centers, Friday was the most common day for these incidents. Finally, GVIs at bars or nightclubs mainly occurred on Saturdays.

Table 17 shows that the largest percentage of GVIs (33.7%) occurred in the early morning between 12:00 AM and 3:59 AM, regardless of location. Both bars or nightclubs and convenience stores or gas stations experienced the greatest number of incidents during this time frame. Most GVIs at homeless encampments occurred between 12:00 PM and 3:59 PM. GVIs at public parks or community centers and retail places or businesses occurred more frequently between 8:00 PM and 11:59 PM.

Table 16. Location of Gun Violence Incidents by Day of Week in Seattle (January 1, 2024 - Sept 5, 2024) (N = 612)

Location	Sun	Mon	Tue	Wed	Thu	Fri	Sat	Total
Apartment/Mobile Home	19	11	6	15	10	4	13	78
Bar/Nightclub	5	1	0	2	0	1	8	17
Convenience Store/Gas Station	8	5	3	3	3	3	3	28
Homeless Encampment	1	4	2	1	3	0	1	12
Hotel/Motel	0	0	0	0	1	0	0	1
Intersection/Roadway	33	23	22	28	21	30	29	186
Medical/Treatment	2	2	2	0	0	0	0	6
Public Park/Community Center	7	7	5	6	6	8	7	46
Residential/Other	31	23	14	23	19	31	19	160
Retail/Business	18	18	7	4	5	7	7	66
School	2	1	0	0	1	0	0	4
Transit Center/Public Transportation	1	0	1	1	0	4	1	8
Total	127	95	62	83	69	88	88	612

Table 17. Location of Gun Violence Incidents by Time Range in Seattle (January 1, 2024 - Sept 5, 2024) (N = 612)

Location	12AM - 3:59AM	4:00AM - 7:59AM	8:00AM - 11:59AM	12:00PM - 3:59PM	4:00PM - 7:59PM	8:00PM - 11:59PM	Total
Apartment/Mobile Home	29	7	5	6	7	24	78
Bar/Nightclub	10	2	1	0	0	4	17
Convenience Store/Gas Station	13	4	0	3	1	7	28
Homeless Encampment	3	3	0	4	0	2	12
Hotel/Motel	1	0	0	0	0	0	1
Intersection/Roadway	69	11	12	11	26	57	186
Medical/Treatment	1	1	0	0	1	3	6
Public Park/Community Center	10	4	1	2	9	20	46
Residential/Other	50	10	8	14	19	59	160
Retail/Business	17	9	2	6	11	21	66
School	2	0	0	1	0	1	4
Transit Center/Public Transportation	1	0	1	1	3	2	8
Total	206	51	30	48	77	200	612

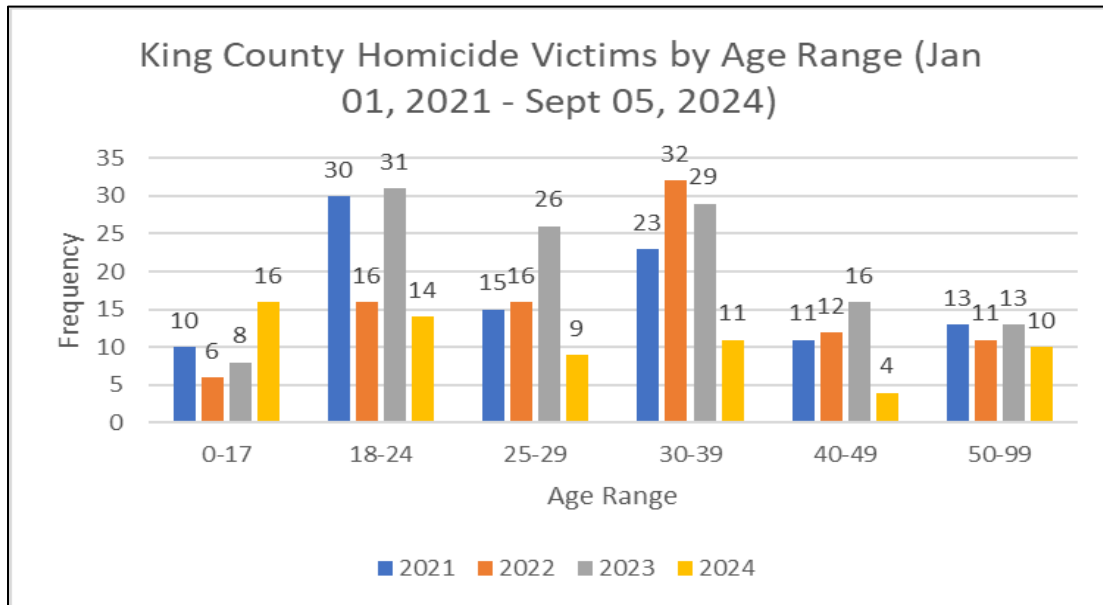
Gun Violence Victim Age

Graphs 1 through 3 demonstrate the age range of homicide victims in King County (Graph 1), Seattle (Graph 2), and other King County cities (Graph 3) between January 1, 2021, and September 5, 2024. In King County and Seattle, the most common age range was between 30 and 39 years old. In other King County cities, there were more homicide victims between the ages of 18 and 24 years compared with other age ranges. Significantly, there have been more homicide victims between the ages of less than one and 17 years in 2024 compared with the preceding three years, and there are still almost four months remaining in 2024. This finding was consistent across all King County, Seattle, and other King County cities.

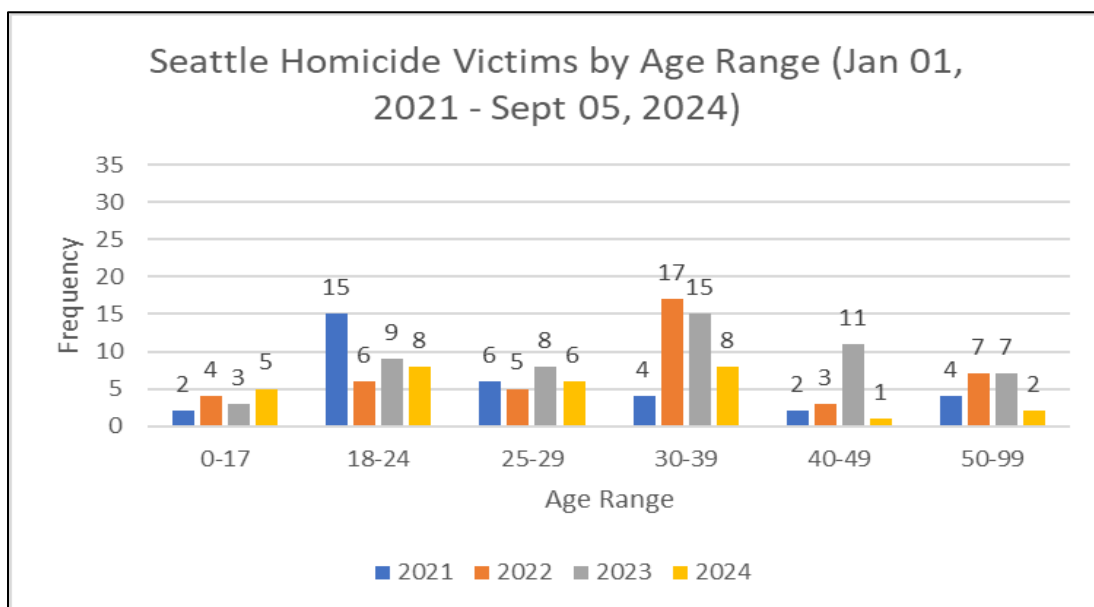
The next set of graphs (Graphs 4 through 6) displays the age range of nonfatal shooting victims in King County (Graph 4), Seattle (Graph 5), and other King County cities (Graph 6) between January 1, 2021, and September 5, 2024. Like the trends in homicide victim age ranges, the most common nonfatal shooting age was between 30 and 39 years for King County and Seattle. However, in other King County cities, there were more victims between the ages of 18 and 24 years compared with other age ranges. Also, like the homicide victim age range patterns, there have been more nonfatal shooting victims in Seattle between the ages of less than one year to 17 years reported so far in 2024 than in previous years. However, this finding was not consistent across all of King County or other King County cities.

Graphs 7 and 8 combine fatal and nonfatal shooting victims, collectively referred to as “gunshot wound victims” between January 1, 2021, and July 31, 2024. Graph 7 emphasizes the number of gunshot wound victims increased among two of the ten most common victims ages, 16 and 19 years of age in King County. The number of victims for the other eight most common victim ages has been trending downward in 2024. Graph 8 shows the age group of less than one year to 17 years experienced an increase in the number of gunshot wound victims in Seattle.

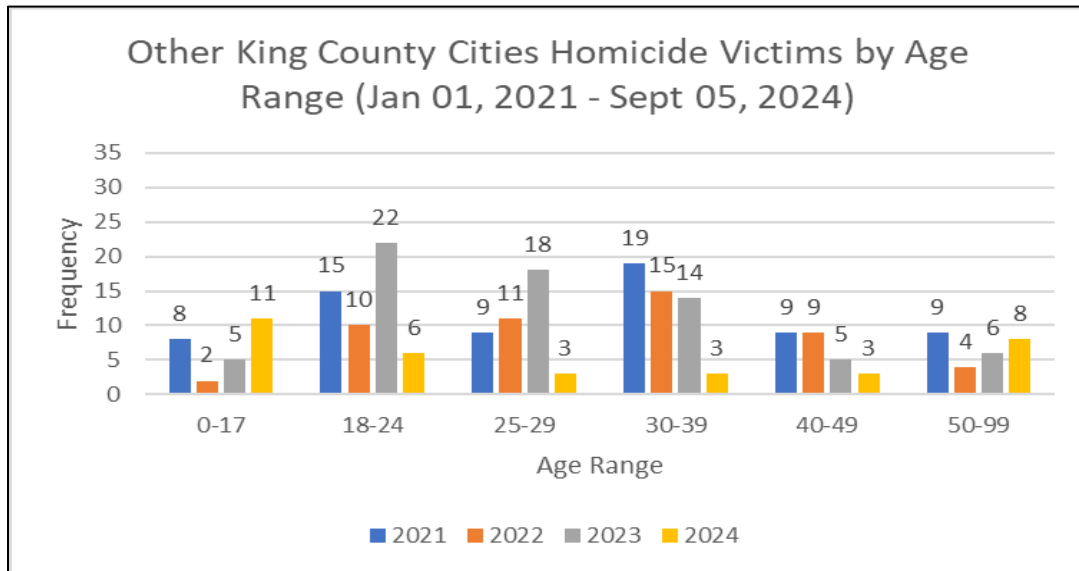
Graph 1. Number of Homicide Victims by Age Range in King County (Jan 1, 2021 – Sept 5, 2024) (N = 382)



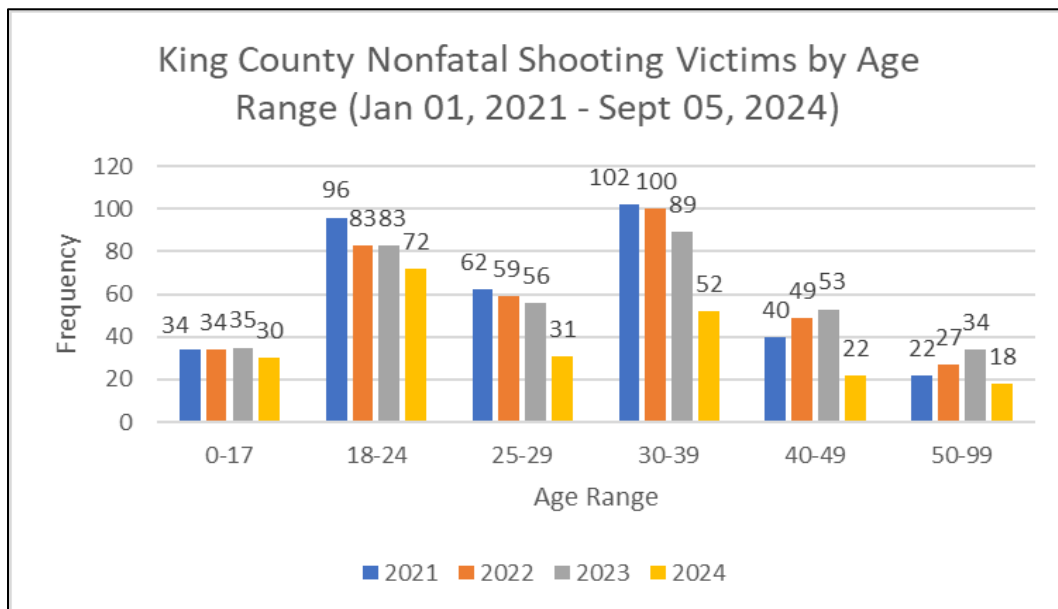
Graph 2. Number of Homicide Victims by Age Range in Seattle (Jan 1, 2021 – Sept 5, 2024) (N = 158)



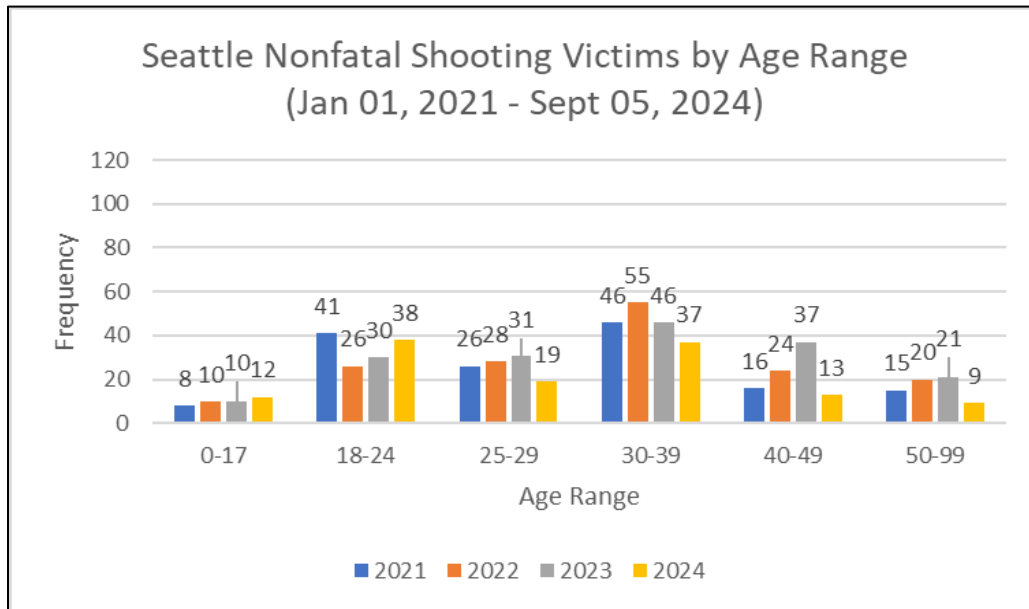
Graph 3. Number of Homicide Victims by Age Range in Other King County Cities (Jan 1, 2021 – Sept 5, 2024) (N = 224)



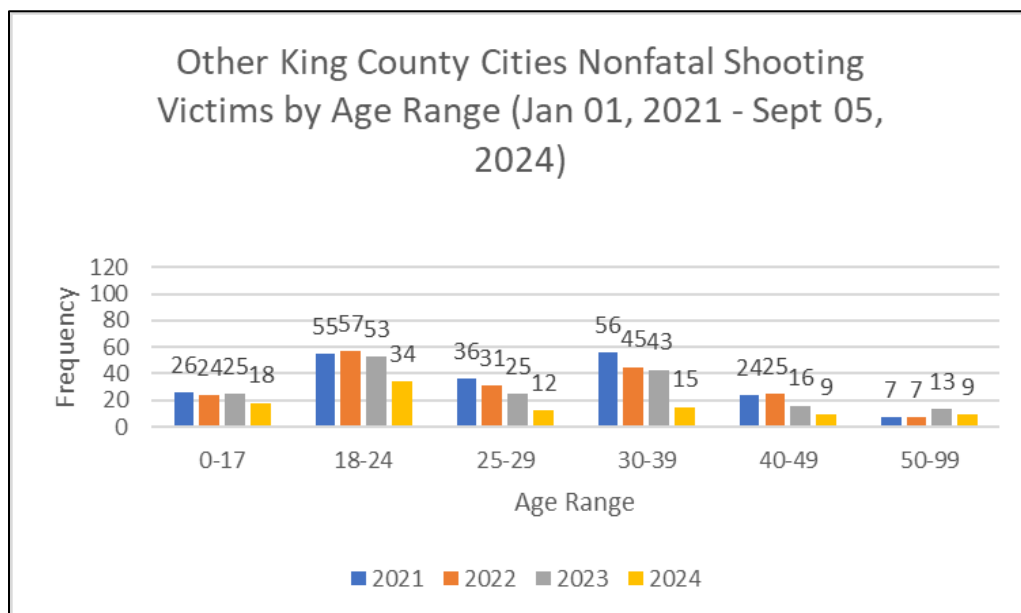
Graph 4. Number of Nonfatal Shooting Victims by Age Range in King County (Jan 1, 2021 – Sept 5, 2024) (N = 1,283)



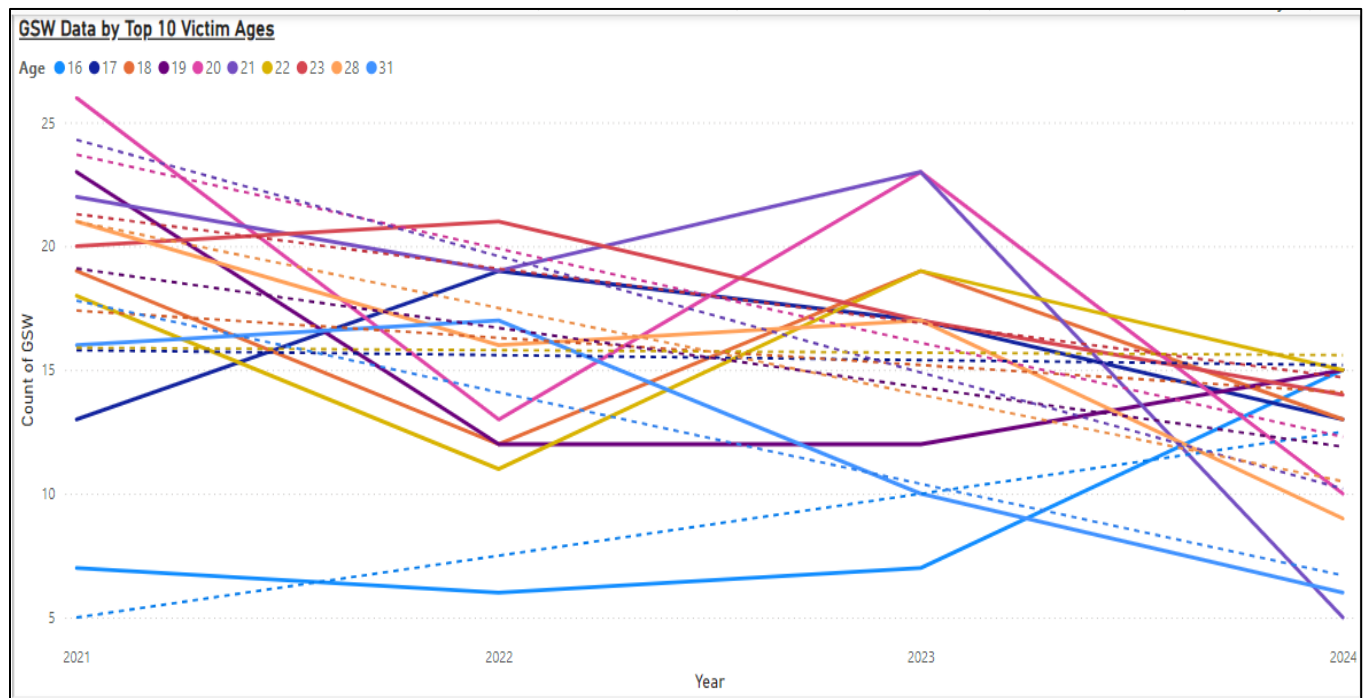
Graph 5. Number of Nonfatal Shooting Victims by Age Range in Seattle (Jan 1, 2021 – Sept 5, 2024) (N = 618)



Graph 6. Number of Nonfatal Shooting Victims by Age Range in Other King County Cities (Jan 1, 2021 – Sept 5, 2024) (N = 665)

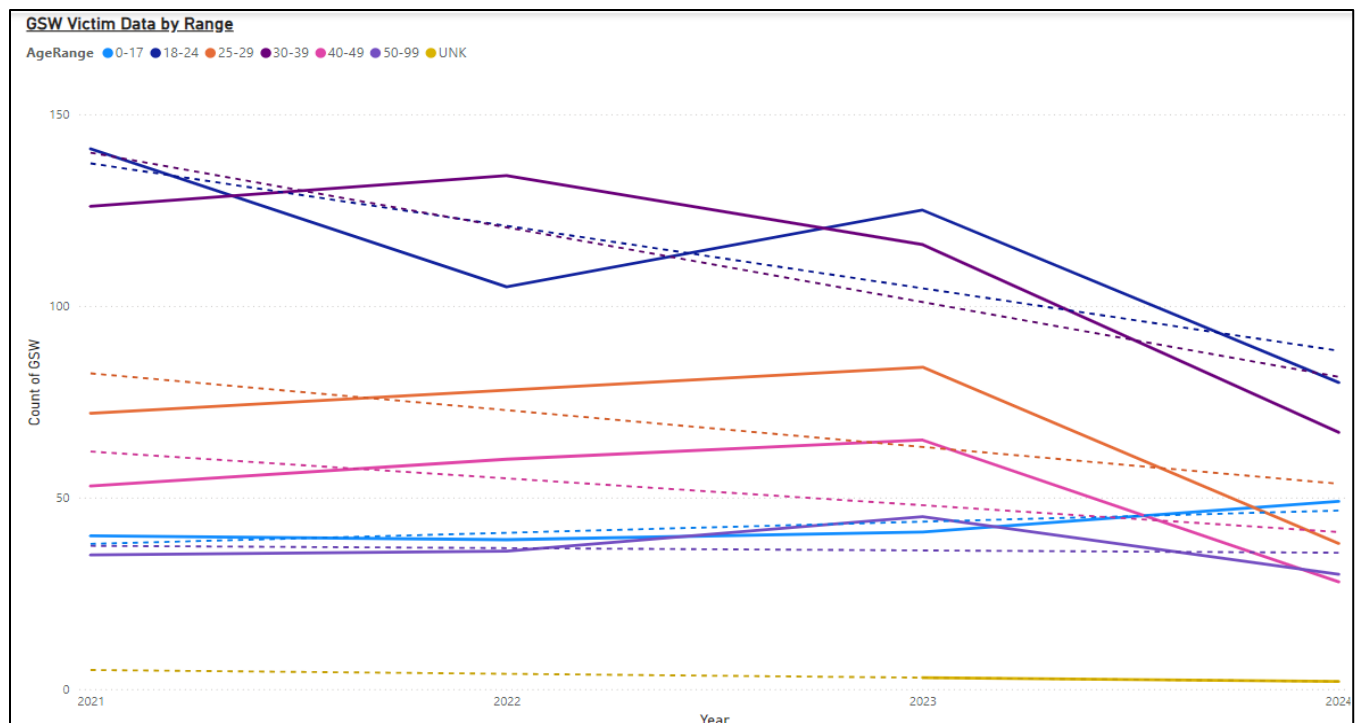


Graph 7. Number of Gunshot Wound Victims by Age and Year in King County (N = 1,692)



*Graph and data provided by King County Prosecuting Attorney's Office

Graph 8. Number of Gunshot Wound Victims by Age and Year in Seattle (N = 782)



*Graph and data provided by King County Prosecuting Attorney's Office

Additional King County Victim Analysis

Figure 1 provides more in-depth descriptions of the age breakdown of gunshot wound victims in King County between January 1, 2021, and July 31, 2024. During that time there were 1,884 gunshot wound victims. The most common age range for gunshot wound victims was between 18 and 24 years old (26.9%). More specifically, the ages of 21 and 23 were the most common victim ages, with each of these ages accounting for 11.2% of victims. Figure 1 also highlights that the number of older gunshot wound victims (27, 28, and 34) decreased in 2024 from the numbers in 2021.

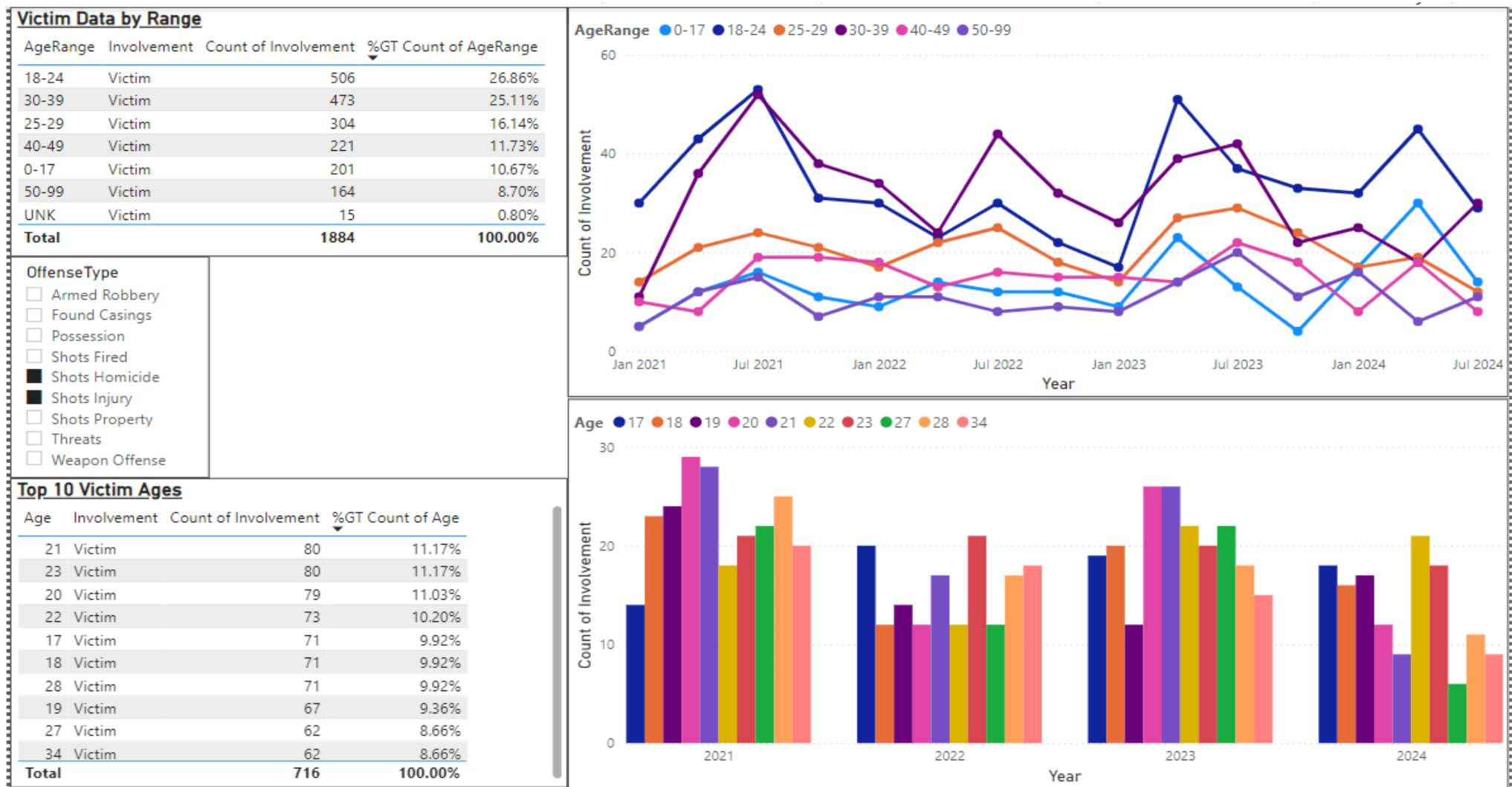
Figure 2 displays more comprehensive descriptions of the age breakdown of all gun discharge victims in King County between January 1, 2021, and July 31, 2024. There were 2,951 gun discharge victims during this time frame. Similar to the gunshot wound victims, there were more gun discharge victims between the ages of 18 and 24 compared to other age groups, with the 18 to 24 year age range accounting for 24.8% of victims. Also consistent with the findings from the gunshot wound victim ages, the most common victim ages were 21 and 23, representing 10.9% and 10.8% of victim ages, respectively. Significantly, the number of 17-year-old victims increased over time. Between 2021 and 2024, the number of older victims – ages 27, 28, and 34 – decreased. This finding was similar to the gunshot wound victim ages in King County during this time frame.

Additional Seattle Victim Age Analysis

Figure 3 presents a detailed analysis of the age breakdown of gunshot wound victims in Seattle between January 1, 2021, and July 31, 2024. There were 875 gunshot wound victims. The age range with the highest number of gunshot wound victims was 30 to 39 years, representing 28.6% of victims. This is inconsistent with King County, where the most common age range for gunshot wound victims was between 18 and 24 years. However, when examining the number of gunshot wound victims for each age, the most common victim age was 20 years, which accounted for 11.5% of the victims. Figure 3 shows that the number of 20-year-old victims decreased between 2021 and 2024, while the number of 23-year-old victims rose during that time.

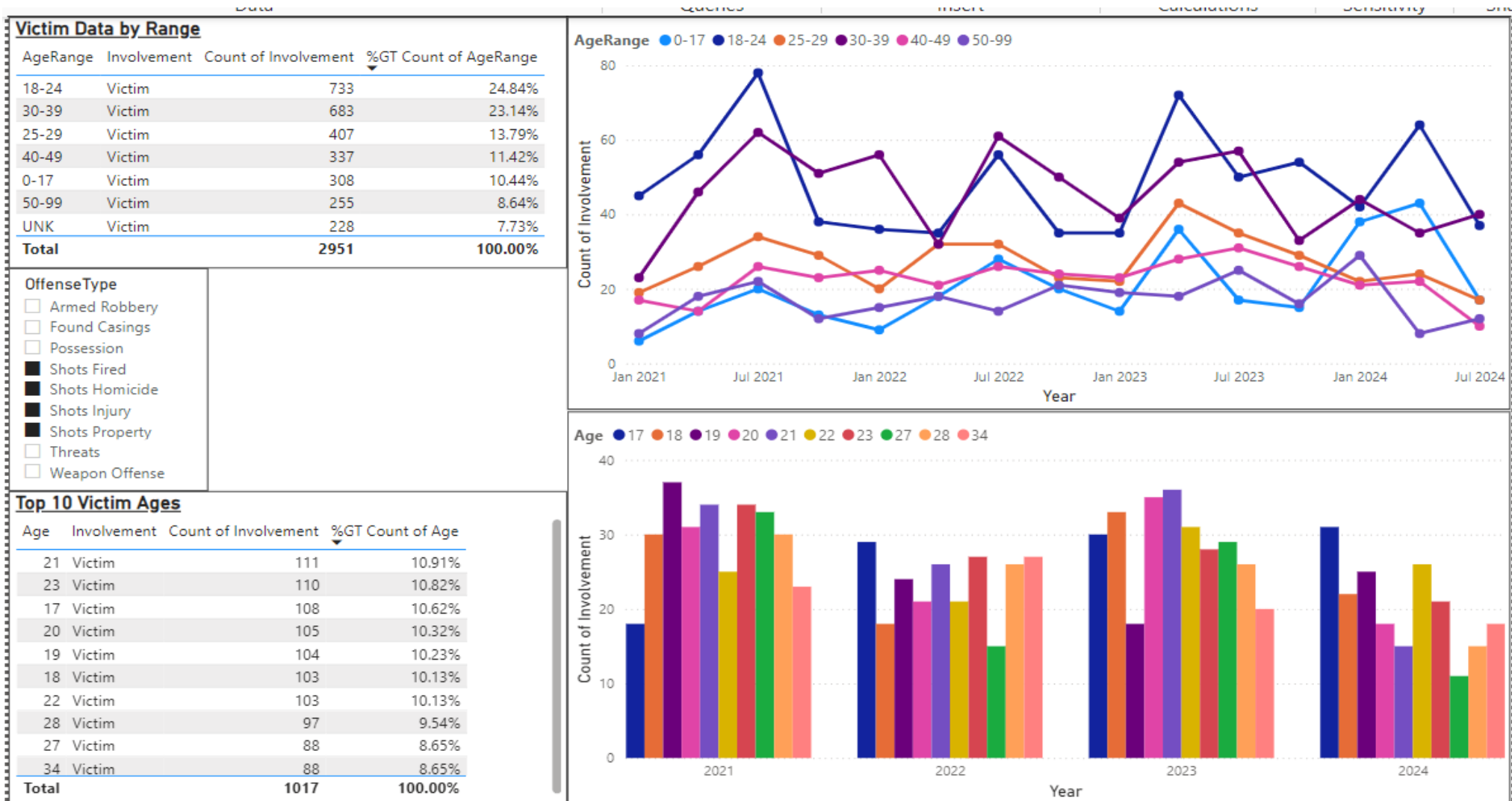
Figure 4 shows an in-depth breakdown of all 1,411 gun discharge victims in Seattle between January 1, 2021, and July 31, 2024. Like Seattle gunshot victims, the age range with the highest number of gun discharge victims was 30 to 39 years. This age group accounted for 26.4% of the victims. Specifically, the age with the highest number of gun discharge victimizations was 22 years, which represented 10.7% of victims. Figure 4 also indicates that the number of victims aged 30 to 39 rose between January 2021 and July 2024.

Figure 1. Gunshot Wound Victims by Most Common Ages in King County (January 1, 2021 – July 31, 2024) (N = 1, 884)



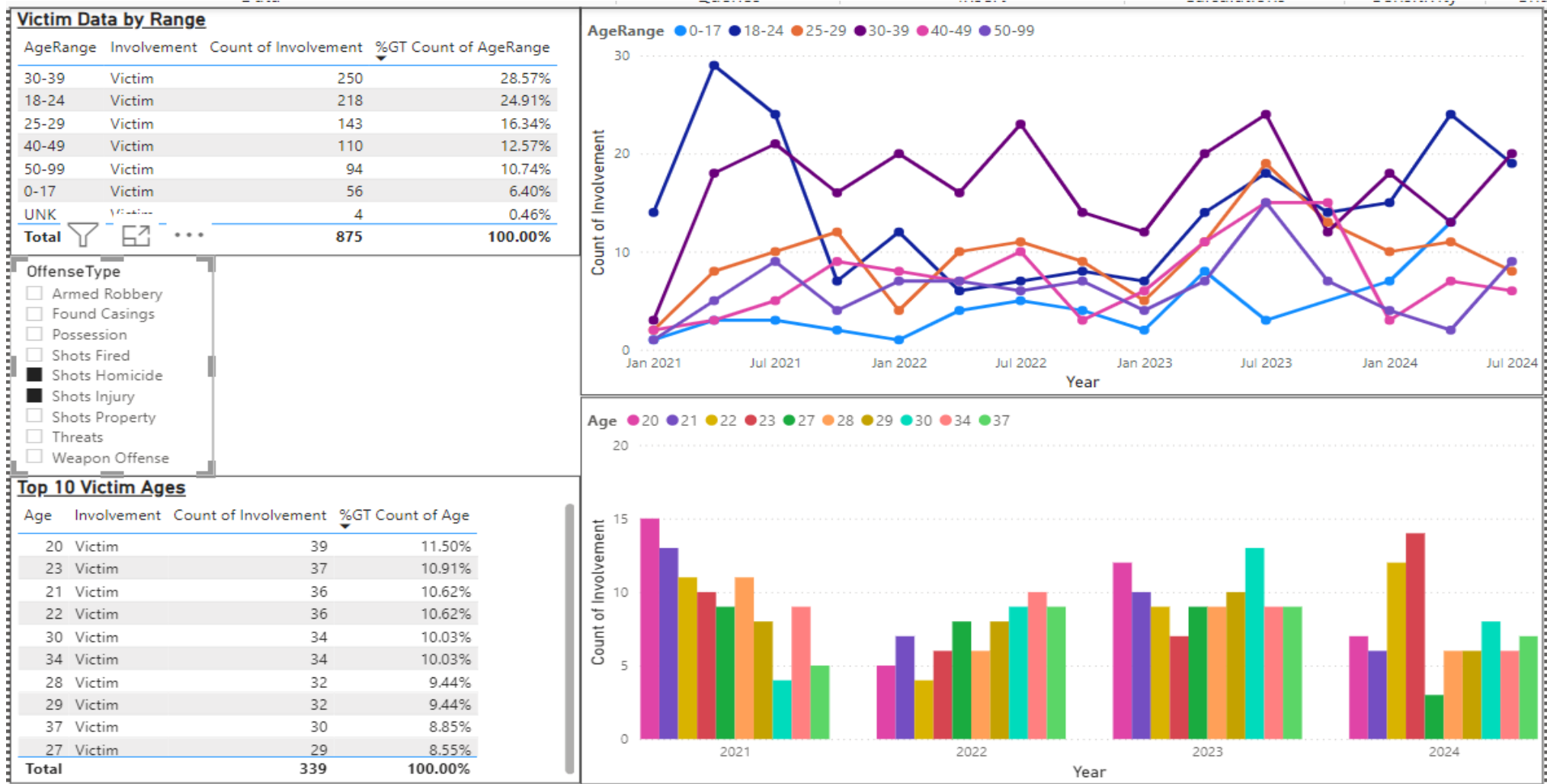
*Graph and data provided by King County Prosecuting Attorney's Office

Figure 2. All Gun Discharge Victims by Most Common Ages in King County (January 1, 2021 – July 31, 2024) (N = 2,951)



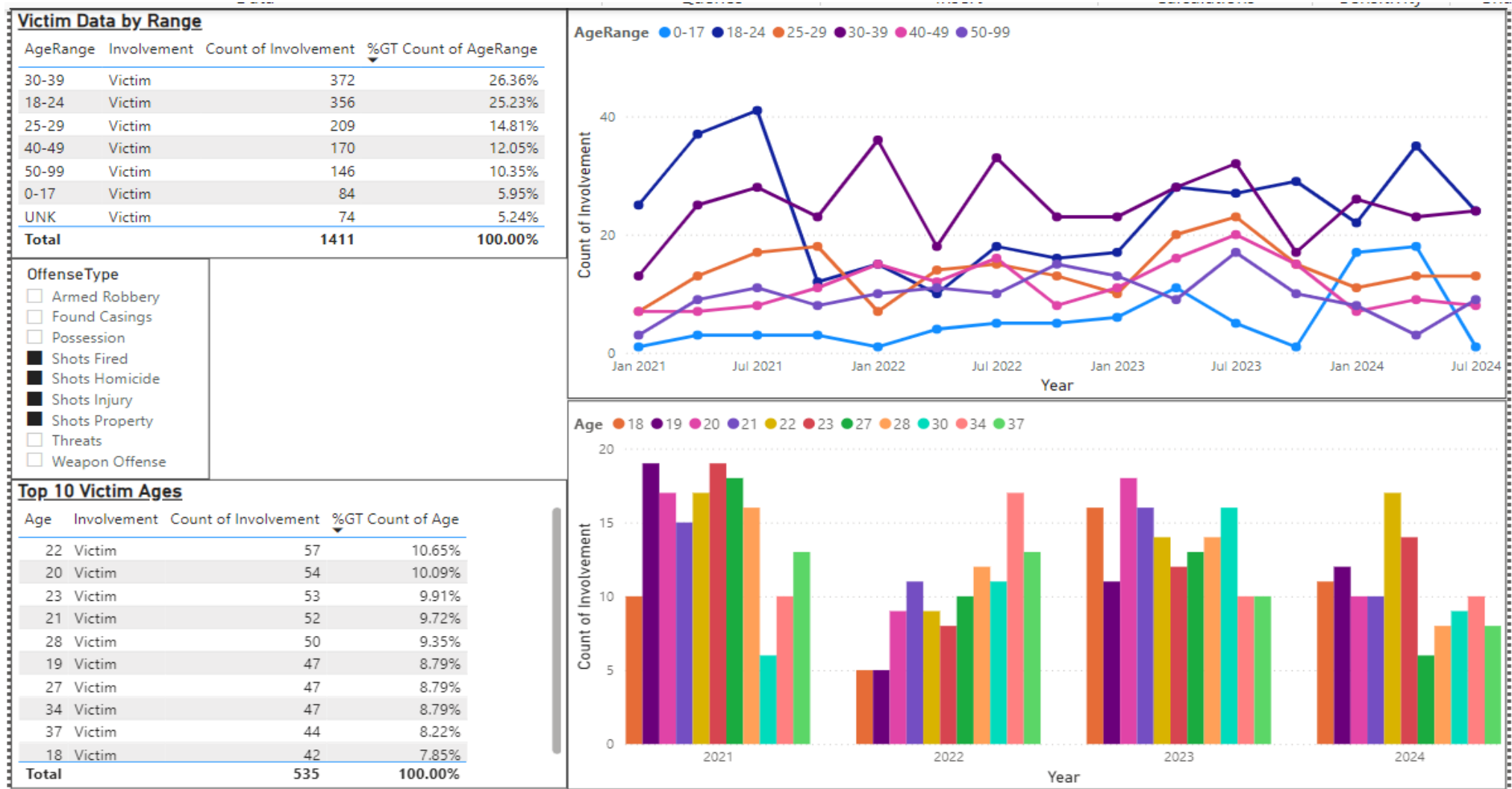
*Graph and data provided by King County Prosecuting Attorney's Office

Figure 3. Gunshot Wound Victims by Most Common Ages in Seattle (January 1, 2021 – July 31, 2024) (N = 875)



*Graph and data provided by King County Prosecuting Attorney's Office

Figure 4. All Gun Discharge Victims by Most Common Ages in Seattle (January 1, 2021 – July 31, 2024) (N = 1,411)



*Graph and data provided by King County Prosecuting Attorney's Office

Gun Violence Victim Age by Location Type

Graphs 9 through 11 display the gun violence victim age ranges⁸ at bars or nightclubs, homeless encampments, retail places or businesses, convenience stores or gas stations, and public parks or community centers in King County (Graph 9), Seattle (Graph 10), and other King County cities (Graph 11). These graphs display the gun violence victims between January 1, 2021, and September 5, 2024. In King County, the location with the highest number of victims, aged less than one year to 17 years old, was the public park or community center. Victims 18 to 24, 25 to 29, 30 to 39, 40 to 49, and 50 to 99 were targeted more at retail places or businesses than at other locations.

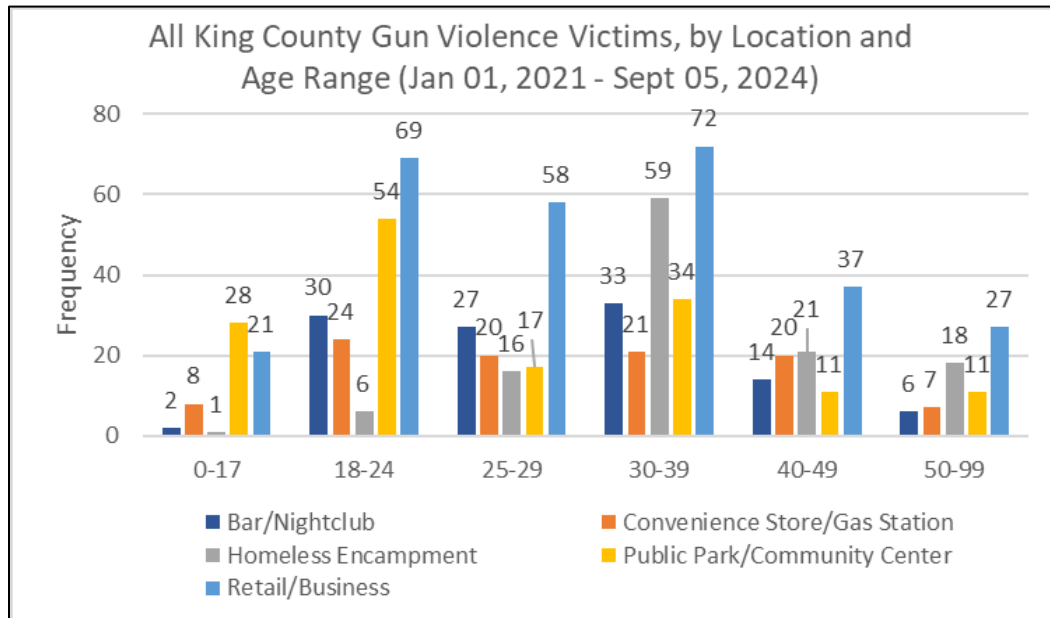
Graph 10 reveals that, like King County in general, Seattle victims aged less than one year to 17 years were victimized more in public parks or community centers. Additionally, victims aged 18 to 24 were victimized more frequently in public parks or community centers. For gun violence victims between 25 and 29, the most common location was a retail place or business. Homeless encampments had a higher number of victims aged 30 to 39, 40 to 49, and 50 to 99.

Graph 11 shows that public parks or community centers, and retail places or businesses were the most common gun violence victimization locations for victims aged less than one year to 17 years in other King County cities. Retail places or businesses in other King County cities experienced the highest number of victims between 18 to 24, 25 to 29, 30 to 39, 40 to 49, and 50 to 99. This pattern was consistent with the location trends in King County.

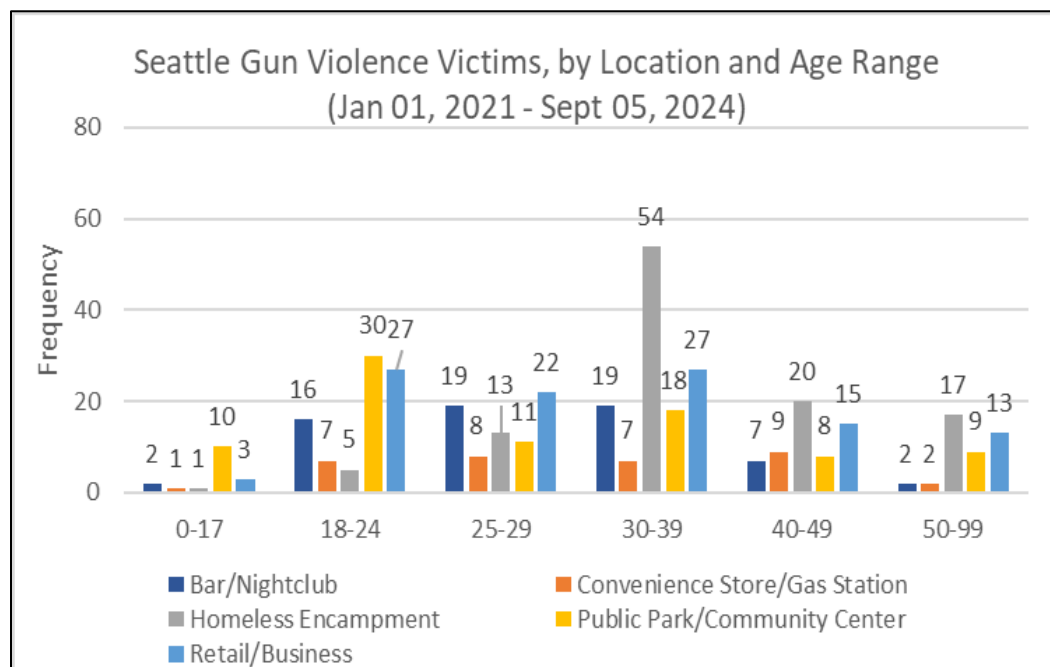
Tables 18 through 20 present the age breakdown by location type and year for King County (Table 18), Seattle (Table 19), and other King County cities (Table 20). The three tables illustrate the location patterns among victim age ranges were frequently consistent over the years. For example, from 2021 through 2024, the King County location with the highest number of gun violence victims aged 18 to 24 years was a retail area or business. This suggests there was continuity in location patterns among specific age groups of gun violence victims.

⁸ The discrepancies in victim counts are due to incomplete/lack of data on the locations.

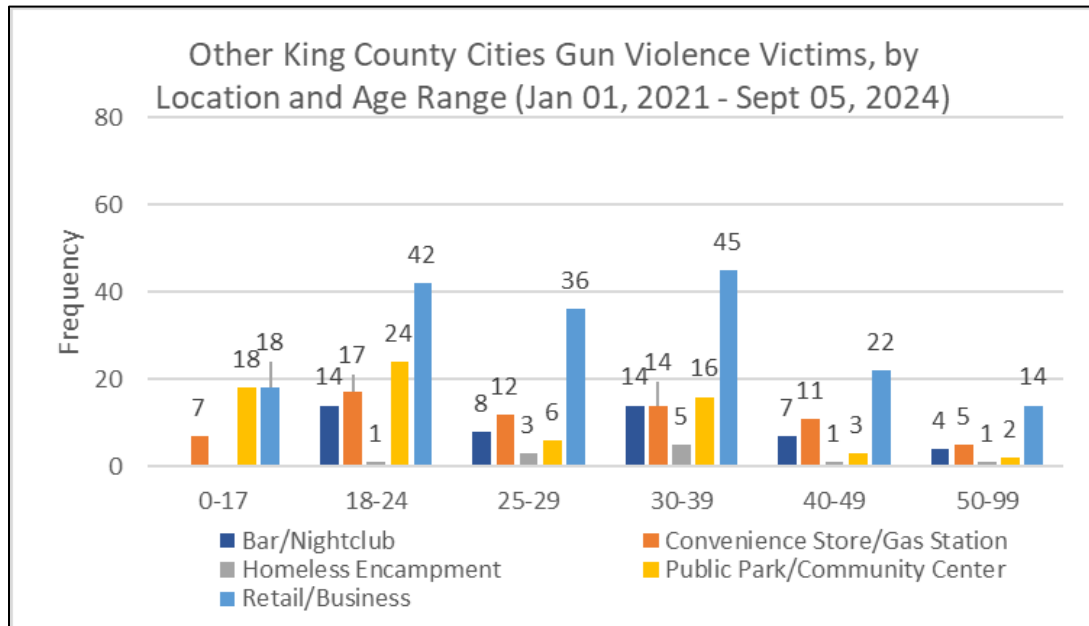
Graph 9. Gun Violence Victims by Location and Age Range in King County (Jan 1, 2021 – Sept 5, 2024) (n = 772)



Graph 10. Gun Violence Victims by Location and Age Range in Seattle (Jan 1, 2021 – Sept 5, 2024) (n = 402)



Graph 11. Gun Violence Victims by Location and Age Range in Other KC Cities (Jan 1, 2021 – Sept 5, 2024) (n = 370)



**Table 18. Gun Violence Victim Age Range by Select Locations Across Years in King County
(Jan 1, 2021 – Sept 5, 2024) (n = 772)**

	Bar/Nightclub	Convenience Store/Gas Station	Homeless Encampment	Public Park/Community Center	Retail/Business	Total	% of Total Victims (n=772)
0-17 (total)	2	8	1	28	21	60	7.8%
2021	0	3	0	5	6	14	
2022	1	2	1	7	6	17	
2023	1	2	0	6	5	14	
2024	0	1	0	10	4	15	
18-24 (total)	30	24	6	54	69	183	23.7%
2021	10	12	0	16	17	55	
2022	5	2	2	15	17	41	
2023	12	10	4	13	20	59	
2024	3	0	0	10	15	28	
25-29 (total)	27	20	16	17	58	138	17.9%
2021	12	7	5	3	21	48	
2022	4	5	6	6	16	37	
2023	6	8	3	3	16	36	
2024	5	0	2	5	5	17	
30-39 (total)	33	21	59	34	72	219	28.4%
2021	8	6	17	12	18	61	
2022	9	3	23	12	20	67	
2023	13	9	9	5	25	61	
2024	3	3	10	5	9	30	
40-49 (total)	14	20	21	11	37	103	13.3%
2021	5	3	4	3	9	24	
2022	2	3	10	3	11	29	
2023	7	12	6	4	10	39	
2024	0	2	1	1	7	11	
50-99 (total)	6	7	18	11	27	69	8.9%
2021	2	1	5	4	4	16	
2022	0	3	6	4	7	20	
2023	2	2	7	1	8	20	
2024	2	1	0	2	8	13	
Total	112	100	121	155	284	772	

Table 19. Gun Violence Victim Age Range by Select Locations Across Years in Seattle (Jan 1, 2021 – Sept 5, 2024) (n = 402)

	Bar/Nightclub	Convenience Store/Gas Station	Homeless Encampment	Public Park/Community Center	Retail/Business	Total	% of Total Victims (n=402)
0-17 (total)	2	1	1	10	3	17	4.2%
2021	0	0	0	1	2	3	
2022	1	1	1	1	0	4	
2023	1	0	0	5	0	6	
2024	0	0	0	3	1	4	
18-24 (total)	16	7	5	30	27	85	21.1%
2021	7	5	0	12	5	29	
2022	1	0	1	7	8	17	
2023	6	2	4	8	8	28	
2024	2	0	0	3	6	11	
25-29 (total)	19	8	13	11	22	73	18.2%
2021	6	4	5	2	6	23	
2022	3	1	5	5	3	17	
2023	5	3	2	2	10	22	
2024	5	0	1	2	3	11	
30-39 (total)	19	7	54	18	27	125	31.1%
2021	4	3	16	7	5	35	
2022	5	1	23	6	6	41	
2023	8	1	6	3	12	30	
2024	2	2	9	2	4	19	
40-49 (total)	7	9	20	8	15	59	14.7%
2021	1	2	4	1	4	12	
2022	2	1	10	2	6	21	
2023	4	6	6	4	2	22	
2024	0	0	0	1	3	4	
50-99 (total)	2	2	17	9	13	43	10.7%
2021	1	1	5	2	3	12	
2022	0	1	6	4	2	13	
2023	0	0	6	1	4	11	
2024	1	0	0	2	4	7	
Total	65	34	110	86	107	402	

Table 20. Gun Violence Victim Age Range by Select Locations Across Years in Other King County Cities (Jan 1, 2021 – Sept 5, 2024) (n = 370)

	Bar/Nightclub	Convenience Store/Gas Station	Homeless Encampment	Public Park/Community Center	Retail/Business	Total	% of Total Victims (n=370)
0-17 (total)	0	7	0	18	18	43	11.6%
2021	0	3	0	4	4	11	
2022	0	1	0	6	6	13	
2023	0	2	0	1	5	8	
2024	0	1	0	7	3	11	
18-24 (total)	14	17	1	24	42	98	26.5%
2021	3	7	0	4	12	26	
2022	4	2	1	8	9	24	
2023	6	8	0	5	12	31	
2024	1	0	0	7	9	17	
25-29 (total)	8	12	3	6	36	65	17.6%
2021	6	3	0	1	15	25	
2022	1	4	1	1	13	20	
2023	1	5	1	1	6	14	
2024	0	0	1	3	2	6	
30-39 (total)	14	14	5	16	45	94	25.4%
2021	4	3	1	5	13	26	
2022	4	2	0	6	14	26	
2023	5	8	3	2	13	31	
2024	1	1	1	3	5	11	
40-49 (total)	7	11	1	3	22	44	11.9%
2021	4	1	0	2	5	12	
2022	0	2	0	1	5	8	
2023	3	6	0	0	8	17	
2024	0	2	1	0	4	7	
50-99 (total)	4	5	1	2	14	26	7.0%
2021	1	0	0	2	1	4	
2022	0	2	0	0	5	7	
2023	2	2	1	0	4	9	
2024	1	1	0	0	4	6	
Total	47	66	11	69	177	370	

Gun Violence Landscape Key Findings

This report assessed gun violence trends in Seattle between January 1, 2021, and September 5, 2024, and compared findings to gun violence trends in King County overall, and other cities in King County. In total, 7,191 GVIs occurred in King County during this time frame, with Seattle accounting for 2,806 (or 39%) of them. This analysis examined gun violence trends across different spatial boundaries, including King County Council Districts, Seattle City Council Districts, and various zip codes. The report also assessed yearly, monthly, the day of the week, time range, and location gun violence patterns. In addition, this landscape analysis examined patterns among gun violence victims, including age and location type. Altogether, there are several key takeaways, which are presented below.

- **Gun offenses were concentrated in King County Council Districts 5 and 8:** Nearly half (roughly 47%) of gun offenses between January 1, 2021, and December 31, 2023, occurred in these two districts.
- **Gun offenses were concentrated in Seattle City Council District 2:** Approximately 33% of gun offenses between January 1, 2021, and December 31, 2023, occurred in this district.
- **Seattle experienced the largest increase in gun violence between 2021 and 2023:** In Seattle, gun violence increased by 66%, while in King County, gun violence increased by 41%, and in other King County cities, gun violence increased by 28%.
- **Gun violence incidents (excluding armed robbery) had the highest monthly averages during the summer months in Seattle, King County, and other King County cities:** Armed robbery had the highest average during the fall months in Seattle, King County, and other King County cities. This suggests seasonal patterns in gun violence are consistent across Seattle and other cities in King County.
- **In public places, gun violence was the highest at retail places or businesses, convenience stores or gas stations, public parks or community centers, bars or nightclubs, and homeless encampments, compared to other public places (excluding intersections or roadways):** Seattle experienced more gun violence at homeless encampments and public parks or community centers than other King County cities. Roughly 89% of all gun violence incidents at homeless encampments occurred in Seattle, while 59% of gun violence incidents at public parks or community centers occurred in Seattle.
- **In Seattle, the monthly averages for gun violence at retail places or businesses, convenience stores or gas stations, public parks or community centers, and bars or nightclubs were highest in 2023:** This finding was generally consistent for other King County cities where the monthly gun violence averages at bars or nightclubs and convenience stores or gas stations were also highest in 2023. The monthly gun violence average was highest for retail places or businesses in 2022, and the monthly gun violence average for public parks or community centers was in 2022. Collectively, the data

suggests there is an uptick in gun violence in Seattle and other King County cities at these public places over time.

- **Gun violence is concentrated in five Seattle zip codes: 98118, 98144, 98104, 98122, and 98108.** The areas encompassing these zip codes account for more than 50% of the total gun violence incidents between January 1, 2021, and September 5, 2024. In each of the years between 2021 and 2024, these zip codes accounted for at least 47% of the total gun violence incidents in Seattle.
- **In the five zip codes with the highest number of gun violence incidents, 31.0% of the incidents occurred at one of the five examined locations (retail places or businesses, convenience stores or gas stations, public parks or community centers, bars or nightclubs, and homeless encampments):** 435 of the 1,404 incidents occurred at these locations. However, the prevalence of gun violence at the locations varied across the top five zip codes. Zip code 98118 experienced more incidents at retail places or businesses, zip code 98104 experienced more incidents at homeless encampments, zip code 98144 experienced more incidents at public parks or community centers, zip code 98122 experienced more incidents at retail places or business centers, and zip code 98108 experienced more incidents at homeless encampments.
- **In Seattle, the most common age range for homicide and nonfatal shooting victims was between 30 and 39 years, while in other King County cities, the most common age for homicide and nonfatal shooting victims was between 18 and 24 years.** In Seattle, 27.8% of homicide victims were between the ages of 30 and 39 years, and 29.8% of the nonfatal shooting victims were between the ages of 30 and 39 years.
- **Leading up to September 5, 2024, there have been more homicide victims between the ages of less than one year and 17 years than in previous years.** This finding was consistent across Seattle, King County as a whole, and other King County cities. Additionally, in Seattle, the number of gunshot wound victims (fatal and nonfatal) between the ages of less than one year and 17 years increased in 2024.
- **In Seattle and other King County cities, public parks or community centers were the most common location (of the five location types examined) for gun violence victims aged less than one year to 17 years.** In other King County cities, retail places or businesses also had the same number of victims aged less than one year to 17 years. In Seattle, public parks or community centers were also the most common locations (of the five location types examined) for victims ages 18 to 24 years, retail places or businesses were the most common location for victims ages 25 to 29 years, and homeless encampments were the most common location for victims 30 years and older. In other King County cities, retail places or businesses were the most common locations (of the five location types examined) for all age ranges.